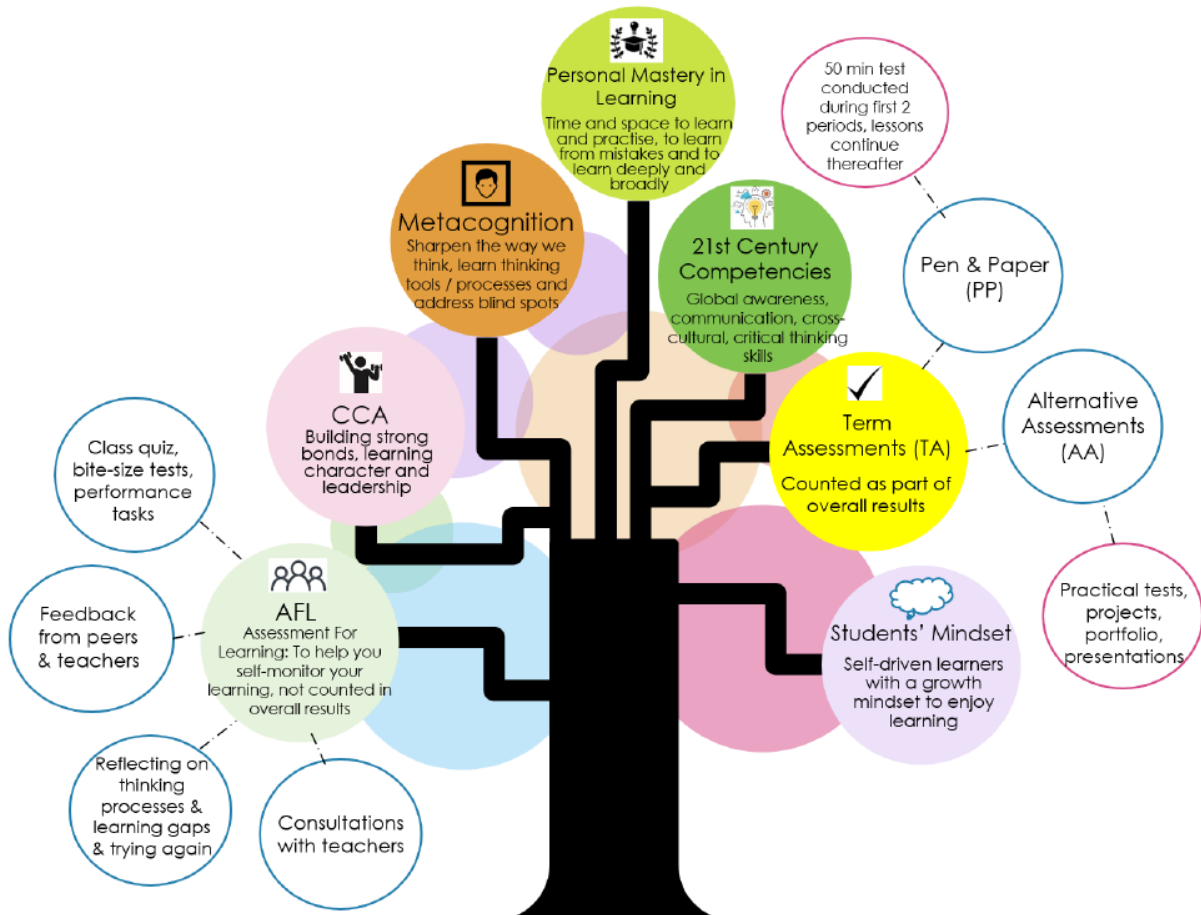


Learning For Life (LFL)

Let's be Future-Ready

- The world is changing rapidly; jobs and workplaces will become more complex and diverse.
- It is increasingly important to ensure you are **future-ready**.
- MOE will place emphasis on **deep and authentic learning**.
- The LFL changes aim to give you more "**joy of learning**".



Term Assessments & Exams

Level	T1	T2	T3	T4	Overall
Sec 3	TA 15%	TA 15%	TA 15%	EYE 55%	100%

At the end of every term, we will give you a Results Slip:

- Term 1 Results Slip - results of TA1
- Term 2 Results Slip - results of TA1, TA2 and First Combined
- Term 3 Results Slip - results of TA3
- Term 4 Results Slip - results of TA3, EYE and Overall

16 January 2019

Principal's Message: Important Information for Sec 3NA Students on 'Learning for Life' 2019

Dear Sec 3 students,

Introduction

1. The world is changing and advancing rapidly, and it is increasingly important to ensure you are **future-ready**. In other words, you need to learn how to anticipate and rise above changes you will encounter when you enter the working world. To do this, MOE announced in 2018 that schools will place **renewed emphasis on Learning for Life (LFL)**, i.e. deep and authentic learning.

2. As the LFL changes aim to enable you to experience greater **'joy of learning'** while acquiring deep skills and knowledge, it is important that you understand what LFL means in Bowen and make full use of the opportunities here to become a much more **curious, creative, collaborative, and confident learner**.

Our goal is that you will discover your strengths and interests, grow them and love what you learn and do.

How your teachers will teach

3. With LFL, your teachers will place renewed emphasis on:

- **Mastery learning** – helping you confidently grasp your learning material; challenging you to aim for a **higher level** of knowledge and skills and to take on a 'can-do' spirit to close your learning gaps.
- **Metacognition** – equipping you with **'thinking tools'** so that in your own individual learning process, you can become more aware of how you learn, understand and review your work. With greater focus and control, you will be able to analyse and synthesise ideas and concepts more thoughtfully.
- **21st Century Competencies (21CC)** – broadening your experience in school so that you can become **all-rounded in character, knowledge and skills**: (i) Civic literacy, global awareness and cross-cultural skills (ii) Communication, collaboration and information skills (iii) Critical and inventive thinking skills.

4. **You will experience learning in different ways and via different modes** – e.g. teachers incorporate real-time, real-world content both in and outside the classroom, lessons involve more group discussions, guided research projects, and/or reviews and reflections. You could also be tasked to prepare and deliver more dynamic class presentations, by yourself and in teams.

5. **To make the most of these experiences: Be more self-directed. Be more empowered in your learning** – use these experiences to understand how the world works, explore your strengths and interests, and hone your communication skills.

When buffeted by the waves of change, we must not remain static. We should adapt, grow, and rise above the challenges. As someone once said, 'You can't stop the waves, but you can learn to surf.'

How we will help you stay on track: 'Assessment for Learning'

6. Teachers will design lessons to include '**Assessments for Learning**' (AFLs) – e.g. strategic questioning, peer critique, quizzes and bite-sized tests and 'proper questions' - so you can regularly practise applying your knowledge and honing your skills and know whether you are on track. AFL will be on-going throughout the term so that you will receive regular feedback.

7. AFLs will not count towards your overall year-long results. Teachers will monitor your progress closely so they can give you more support should you need it.

How you should take advantage of Learning for Life

8. As there will be fewer assessments that count (only one set per term) towards your end-year Overall grade, you should **take advantage of teachers' feedback** to work on your areas of needs and make the effort to seek clarification if you have any questions or look for your teachers for consultation. More importantly, consciously **give yourself the time and space to explore your strengths and interests, enjoy your learning and train your mind, and aim for personal mastery learning** (in studies, CCA and your hobbies). Do not feel anxious or pressured to spend extended periods of time studying or aiming only for straight As.

9. As Prime Minister Lee Hsien Loong said on 5 Jan 2019, 'We want to inculcate in young Singaporeans the passion to "learn for life" so that you are all prepared for the future economy.' **Let's enjoy ourselves learning for life!**

Yours sincerely,



Mr Liu Earnler
Principal on behalf of All Teachers @ Bowen

.....
More Details on Learning for Life

How we will assess your learning: Term Assessments and Exams

1. To provide more time for deep learning:

- There will no longer be Class Tests / Common Tests.
- In T1 and T3, each subject will be assessed through a Term Assessment (TA). **TA1** will be conducted over T1 W5-8 and **TA3** over T3 W5-8. This will spread out the pace and enable you to continue with deep learning.
- In T2, there will be no Sec 3 mid-year exams; instead, your learning will be assessed through **TA2** (conducted over T2 W5-8).
- In T4, there will be the usual **End-of-Year Exam** (EYE) (T4 W3-4).
- In other words, **each subject will only include one assessment each term that will count towards the year-long grade**. The weightings of the TAs and exams will be as follows:

Level	T1	T2	T3	T4	Overall
Sec 3	TA 1: 15%	TA2: 15%	TA3: 15%	EYE: 55%	100%

2. There will be two types of TAs:

- **Alternative Assessments** (AAs) assess learning through a practical test / written portfolio / class presentations, etc. Teachers will inform you about what the AAs require through a 'Task Sheet', given to you ~2-3 weeks before the deadlines. The deadlines

Bowen Secondary School (Secondary 3 Normal "Academic")

for various AAs will be spread out in Weeks 5 and 6 (a few AAs may have deadlines in other weeks, because of the sequencing of the lessons) to help you manage your time.

- **Pen and Paper** tests (PPs) will assess learning through the 'usual' kind of test formats. All PPs will be 50 min long and be conducted in the first period of the day, spaced out through Weeks 7 and 8. The normal timetabled lessons will resume from the 9am period onwards.

3. **A subject will be tested through either AA or PP** (not both). If you take 7 subjects, you will have 7 AAs and PPs each term. Each term, about 3-5 subjects will be assessed through AAs while the rest will be assessed through PPs (this proportion may change across terms).

4. **AAs and PPs are spread carefully throughout the 'TA Window' of Weeks 5 to 8**, to help you manage daily work and studying for the PPs. In addition, teachers will give students more time to complete daily homework. **The TA1 Schedule is included on page 6.**

How about CCAs?

5. As CCAs are an integral part of your holistic learning, your CCAs activities will continue in general during TA Windows. This will help you learn to multi-task and manage the various demands on your time.

- In Term 1, CCAs will continue during the TA1 Window.
- In Term 2, TA2 will take the place of the mid-year exams (MYE). As TA2 is significantly smaller than the MYE of the past, CCAs will continue till Week 6 (inclusive) to provide more time for your CCAs. CCAs will stand down in Weeks 7 and 8, and resume in Week 9.
- In Term 3, CCAs will continue during the TA3 Window. CCAs will stand down at end of Term 3, so you can then focus on the End-of-Year Exam (EYE).
- In Term 4, CCAs will resume after the EYE.

How we will inform you of your progress

6. To reduce over-emphasis on examination results and peer comparisons, and to re-focus on holistic development, the termly results slips will be modified. E.g. results will be reported in whole numbers, while class and level positions will be removed.

7. At the end of every term, we will give you a Results Slip:

- Term 1 Results Slip - results of TA1
- Term 2 Results Slip - results of TA1, TA2 and First Combined
- Term 3 Results Slip - results of TA3
- Term 4 Results Slip – results of TA3, EYE and Overall

8. Your FTs will write their remarks in your results slips to share about **your holistic growth**. FTs will also speak with parents who attend the Term 2 Meet-the-Parents session about your holistic growth too.

Sec 3 Normal (Academic) Term Assessment 1 Schedule

Term/Week	Day	Date	Alternative Assessment	Pen and Paper (8 to 8.50am) *Lessons resume at 9am.
Term 1 Week 5	Mon	4-Feb-19	NIL	NIL
	Tue	5-Feb-19		
	Wed	6-Feb-19		
	Thu	7-Feb-19		
	Fri	8-Feb-19		
Term 1 Week 6	Mon	11-Feb-19	<ul style="list-style-type: none"> • Design & Technology - Situational Analysis (DDL*) • Art - Art Tells Story - Sketches + Artist Research Presentation (DDL) 	NIL
	Tue	12-Feb-19		
	Wed	13-Feb-19		
	Thu	14-Feb-19		
	Fri	15-Feb-19		
Term 1 Week 7	Mon	18-Feb-19	NIL	NIL
	Tue	19-Feb-19		"O" and "N" English
	Wed	20-Feb-19		Social Studies and Geography / History / Literature Elective
	Thu	21-Feb-19		"O" and "N" Mother Tongue
	Fri	22-Feb-19		"O" and "N" Mathematics
Term 1 Week 8	Mon	25-Feb-19	NIL	No paper
	Tue	26-Feb-19		"N" Additional Mathematics
	Wed	27-Feb-19		"O" and "N" Science (Chem/Bio) or (Chem/Phy)
	Thu	28-Feb-19		No paper
	Fri	1-Mar-19		No paper
Term 1 Week 9	Mon	4-Mar-19	<ul style="list-style-type: none"> • Physical Education - Games Practical & Theory Assessment (DDL) • Food and Nutrition - Paired work presentation - Nutrients (DDL) 	NIL
	Tue	5-Mar-19		
	Wed	6-Mar-19		
	Thu	7-Mar-19		
	Fri	8-Mar-19		
Term 1 Week 10	Mon	11-Mar-19	<ul style="list-style-type: none"> • Physical Education - Games Practical & Theory Assessment (DDL) 	NIL
	Tue	12-Mar-19		
	Wed	13-Mar-19		
	Thu	14-Mar-19		
	Fri	15-Mar-19		

*DDL: Assessments are due during lesson time.