

2024 GCE N LEVEL RELEASE OF RESULTS



Today's Programme

Opening Address

Mr Goh, Vice-Principal

Joint Intake Exercise

Mrs Bernice Kuan, Sec 4&5 Year Head

Students' Achievements

Mr Loh, Principal

Release of Results

Form Teachers

Others:

ECG Booth and Care Teachers - at back of Hall



bowen
SECONDARY



facebook.com/bowensec



bowensec_official



Opening Address Mr Goh, Vice-principal

Corner • Leader • Champion

Welcome Back!





bowen
SECONDARY

GRADUATION CEREMONY

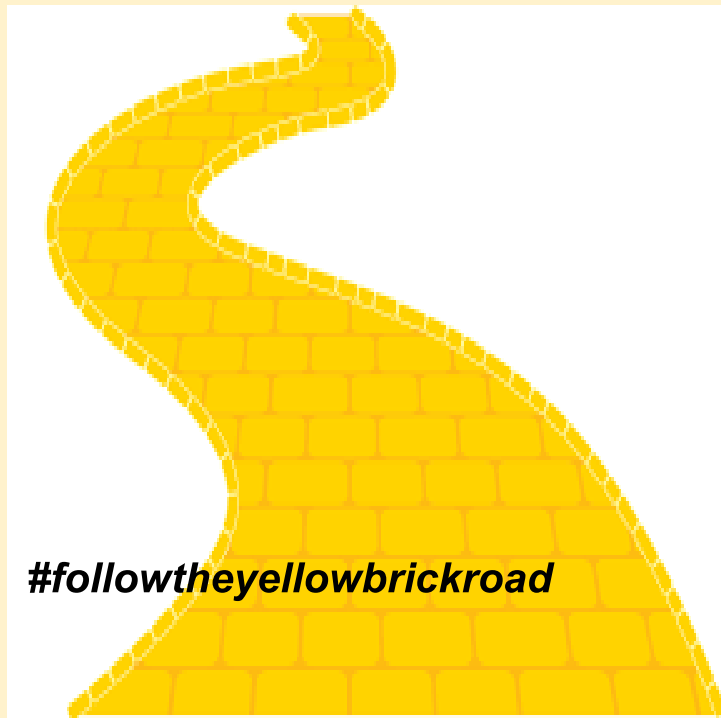


GROW AND EMBRACE CHANGE
TO BECOME A MASTERPIECE

Class of 2024



GROW AND **E**MBRACE CHANGE
TO BECOME A **M**ASTERPIECE



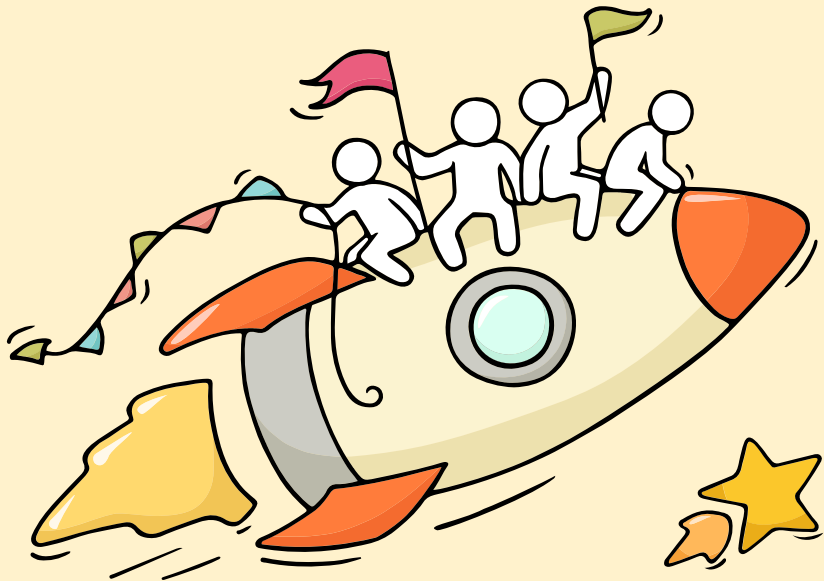
#followtheyellowbrickroad





Four or five years ago, somewhere along Lorong Napiri, a group of GEMies entered Bowen Secondary School where they were warmly welcomed by older GEMies and the Bowen Bear with a big heart.

You have worked hard to reach this stage. Let's celebrate your efforts!



Finally, we are going to get our results!



Today marks the completion of that journey. You, our GEMies, shine brightly, each one of you having become a Masterpiece in your own right.



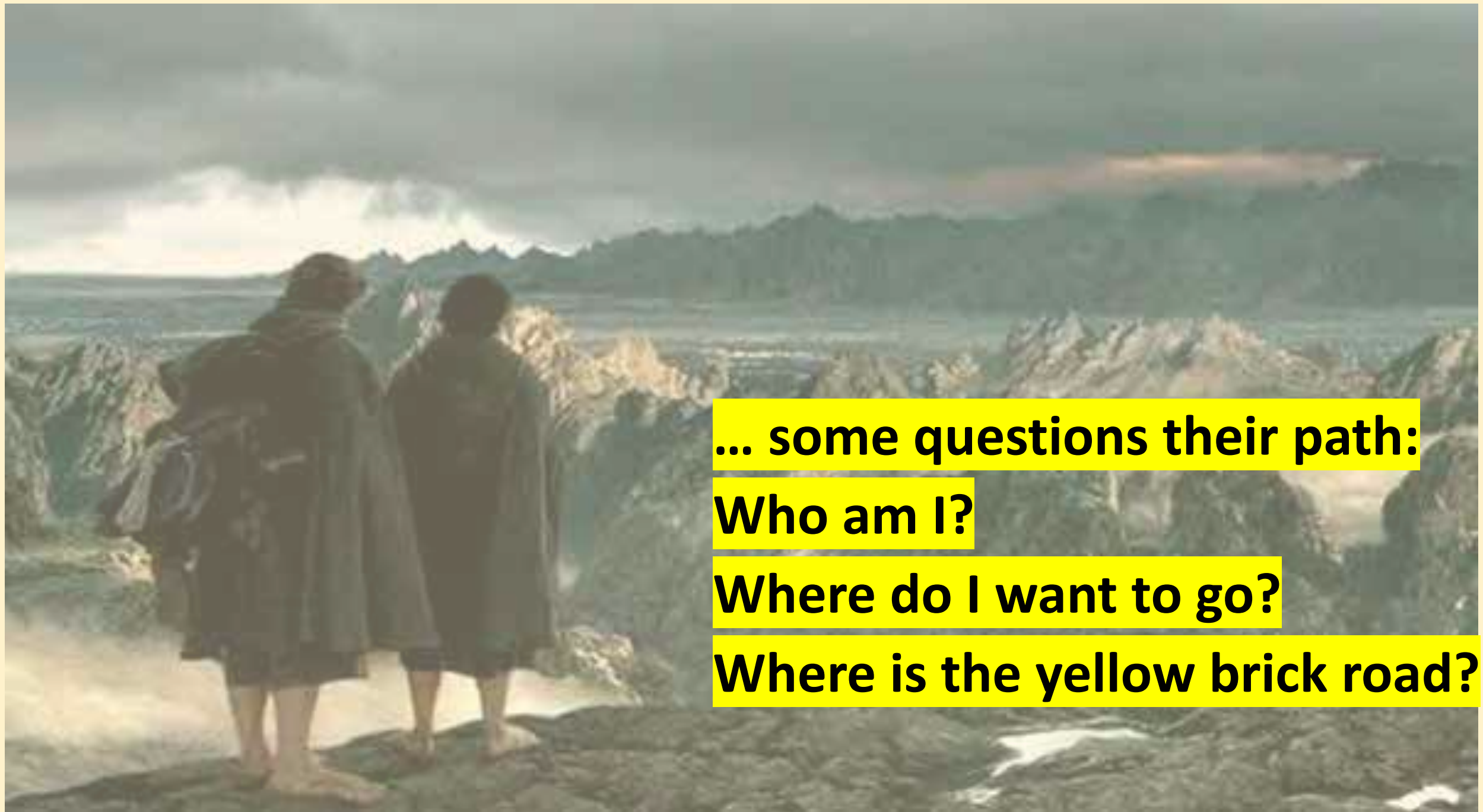
**GROW AND EMBRACE CHANGE
TO BECOME A MASTERPIECE**

Of course, it was not always an easy journey.

Along the yellow brick road, there were challenges.

Some faced rough terrains...





... some questions their path:

Who am I?

Where do I want to go?

Where is the yellow brick road?

Yet, through it all, their shiny Ruby Shoes and the school motto “**I Believe, therefore I Am**” – reminded them of their strengths.

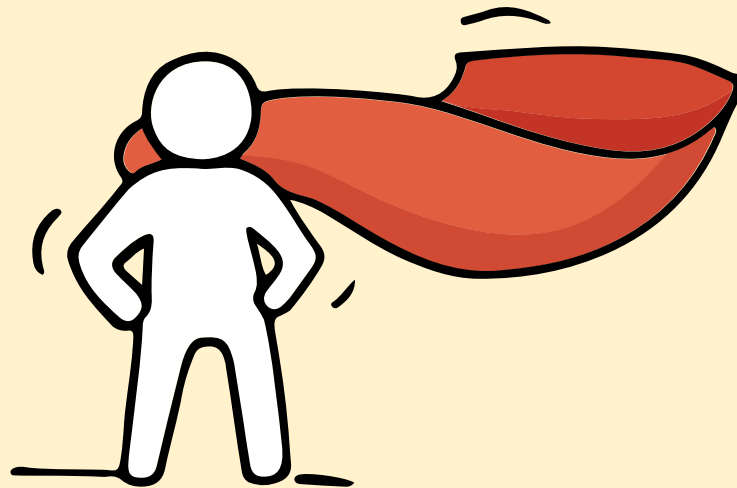
Armed with resilience, compassion and an excellence mindset, they persevered, overcoming adversity and continuing down the yellow brick road to the Emerald City.





**As this journey ends,
another one begins.
The road ahead will be
about discovering who
you truly are and where
you belong.
Like Dorothy, trust in
yourself, and you'll find
your way.**

Remember that while **everyone's educational journey is different, we can each have a fulfilling outcome!**



Resources to support you as you receive your results

Receiving your results and making decisions about your post-secondary pathways can be exciting to some, but stressful to others.

Scan this QR code for an infographic with some helpful resources to support you.



<https://go.gov.sg/nlevelstudentresource>



Thinking about Your Next Step?

Consider these questions...

Where do I want to go?

Who am I?

How Do I Get There?



In the infographic, you can find resources which can help you make informed decisions.

PLANNING YOUR NEXT STEP

These resources will help you chart your path ahead:



• What's Next Brochure

<https://go.gov.sg/whats-next-nlevel>



• Contact the ECG Centre @ MOE

<https://go.gov.sg/moe-ecg-centre>



• MySkillsFuture Student Portal

<https://go.gov.sg/MySFSec>

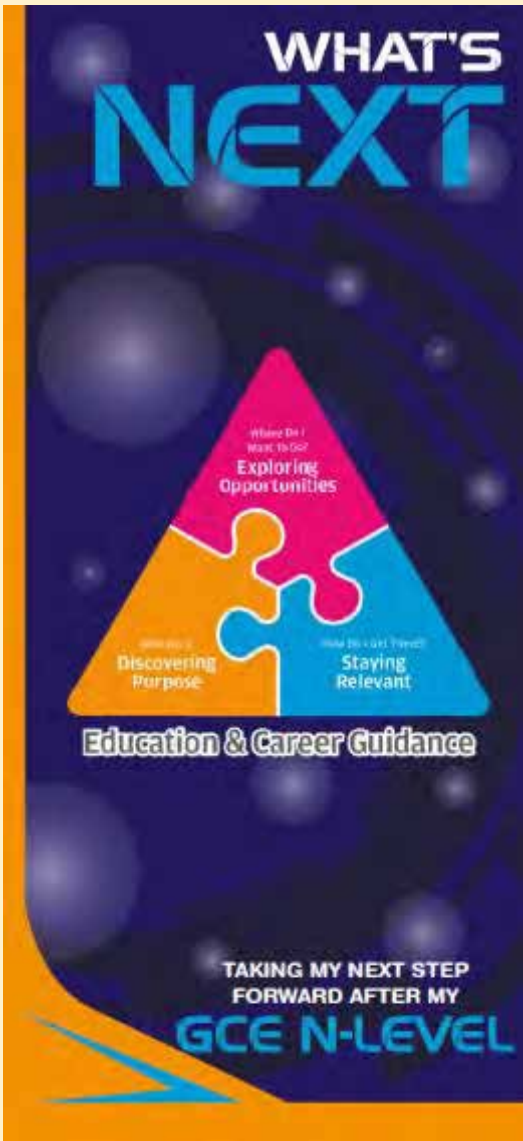


• Chat with your school's ECG Counsellor

You may feel nervous or unsure as you face new challenges, but remember, like the Lion, you have shown great courage, whether it was stepping outside of your comfort zone, trying something new, or simply facing the uncertainty of what lies ahead.







Resources to help you make informed decisions



PLANNING YOUR NEXT STEP

These resources will help you chart your path ahead:

-  • **What's Next Brochure**
<https://go.gov.sg/whats-next-nlevel>
-  • **Contact the ECG Centre @ MOE**
<https://go.gov.sg/moe-ecg-centre>
-  • **MySkillsFuture Student Portal**
<https://go.gov.sg/MySFSec>
-  • **Chat with your school's ECG Counsellor**



MySkillsFuture Student Portal

Use the information and tools to explore various education and career pathways and take charge of your future.

Resources to help you make informed decisions

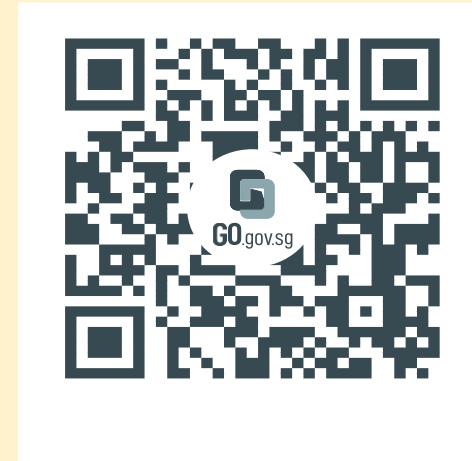
Post-Secondary Education

Learn more about the admissions exercises and programmes



<https://www.moe.gov.sg/post-secondary/admissions>

Learn more about the post-secondary education institutions



<https://moe.gov.sg/post-secondary/overview>

About Discover On My Way (D:OMW)

Discover your education and career interests and chart your personal and professional future with **Discover On My Way!** Explore different careers, connect with industry professionals and peers, and get firsthand exposure at various job roles. Let's get you on your way to discovering!

[Join Programmes!](#)

We know – deciding on which course to take and what career to pursue isn't easy... Through programmes organised by NYC and our partners, you'll be able to meet professionals from various industries and youth on the same journey as you.



Outward Bound Job Taster



Esports Events Management Job Taster



Career conversation and discovery



Concerned about your next steps?

Stop

- Calm yourself down. Take a few deep breaths.

Think

- Think through the different options that are available for you.
- Remember that the N-Level is not the end point and is only one part of your life journey.

Do

- Have conversations with trusted adults who know you well to advise and guide you (parents, teachers, ECG Counsellor).
- Decide and act based on your options.

When you receive your results, you may experience a range of emotions.

Managing these emotions well will allow you to stay calm and make rational decisions.


You have the intelligence and the knowledge to navigate your future. Like the Scarecrow, never doubt your ability to think creatively and solve problems.

You have learned how to think critically, solve problems, and adapt. You are leaving Bowen not just with knowledge, but with the wisdom to use it well.



Reaching out for support is a sign of strength

If you have questions about your options or are not coping well, you can reach out to trusted adults such as a parent/guardian, teacher, School Counsellor or ECG Counsellor. You can also talk to a trusted friend.



*Who can we
go to for ECG
advice?*

Make an appointment to speak with
your ECG Counsellor in school

OR

Make an ECG counselling
appointment via the
ECG Centre @ MOE

<https://go.gov.sg/moe-ecg-centre>

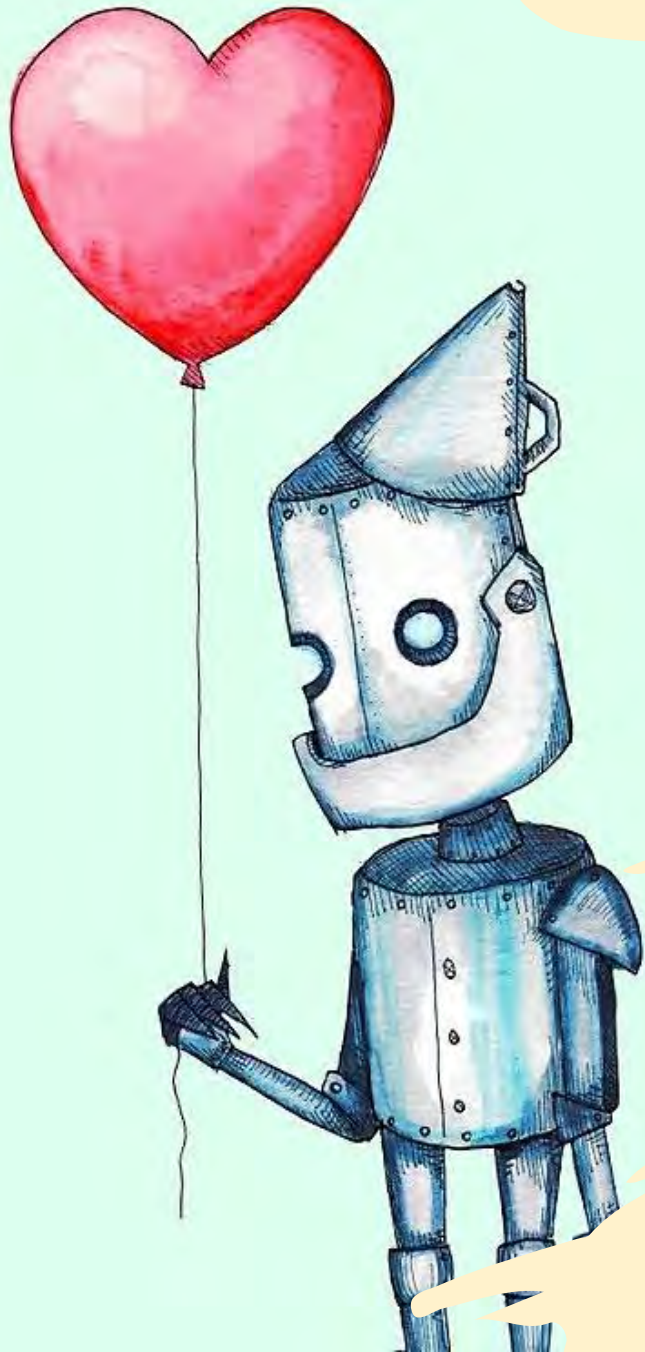


IT'S NOT
WHERE YOU GO



IT'S WHO YOU MEET
ALONG THE WAY

Like Dorothy's companions who walked with her on the yellow brick road, remember that you are never truly alone. Cherish the friends, family, and mentors who support you as you venture into your future.



And in the pursuit of success, don't forget the Tin Man's lesson—the importance of heart.

Over the years, we've seen you support one another or lend a helping hand to a friend in need.

These qualities are just as important as the knowledge you've gained.

The heart you've shown will lead you to build relationships, nurture communities, and care for those around you.

Having difficult emotions during a stressful and uncertain period is normal. Keep a look out for some of these signs:

- D** Deliberately avoiding others
- I** Increased irritability, restlessness, agitation, stress and anxiety
- S** Sending or posting moody messages on social media
- T** Talking about death or dying
- R** Reacting differently or gradually losing interest in things they used to like
- E** Eating more than usual or having a much reduced appetite
- S** Sleep pattern changes with difficulty falling asleep or oversleeping
- S** Slowing down of energy levels

If you notice any of these signs in yourself or your friends, **have a chat with your School Counsellor or teacher,**

Or contact SOS 24-hour hotline at **1767** or SOS 24-hour CareText/Whatsapp at **91511767**
For cyber wellness related matters, call Help123 at **1800-612-3123*** or email **hello@help123.sg**

*available only from Mon to Fri (excluding Public Holidays), from 9am - 6pm.



Keep a lookout for some of these signs in your peers or in yourself

How can we support one another?



Supporting Your Friend

- We may each experience different emotions upon receiving the results.
- You can share your friends' joy by congratulating them.
- If your friends appear to be disappointed with their results, encourage them.
- Alert a teacher if you are worried for them.



Keep a lookout for your friends in distress. You can support them in the following ways:



Support is readily available for you.

There are other hotlines and chats available if you are more comfortable seeking help using these platforms. These can also be found in the infographic which you accessed earlier.



SOS provides round-the-clock emotional support for those in distress, thinking of suicide or affected by suicide.

Call: **1767**
(24-hour helpline)

Whatsapp: **9151 1767**
(24-hour Care Text)

TOUCHline is a helpline to provide youths with emotional support and practical advice.

Call: **1800-377 2252**

*Monday- Friday (Excluding Public Holidays):
9am – 6pm*

Community Health Assessment Team

(CHAT) provides personalised and confidential mental health checks and consultation for youths. To speak with a youth support worker, you can:

Visit: **CHAT Hub at *Scape, 2 Orchard Link, #04-01A**

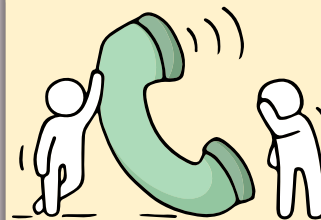
Call: **6493 6500/ 6501**

Email: **CHAT@mentalhealth.sg**

Carey is an online platform by Care Corner that provides free mental health check-ins with mental health professionals. Find out more at:
<https://carey.carecorner.org.sg/>

mindline.sg is an online platform that provides tools, tips and resources to help you manage your health and well-being. Find out more at:

www.mindline.sg



eC2 is an e-Counselling Centre where you can talk to a trained counsellor about the issues you are facing, right where you are.

Chat with a counsellor at:

www.ec2.sg

*Monday – Friday (Excluding Public Holidays):
10am – 12pm & 2pm – 5pm*



**The N-Level
examination is not
the end point.**

**It is part of your
education journey.**

And finally, remember that
the power to achieve your
dreams lies within you.



BE

**BOLD
WELL
YOU
HAPPY**

I believe, Therefore I am

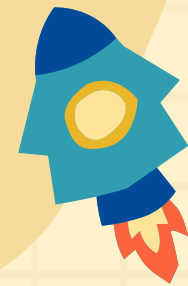


bowen
SECONDARY

Nurturing Learning. Developing Character. Inspiring Service.

Congratulations, class of 2024!

May the force will always be with you!






bowen
SECONDARY



facebook.com/bowensec



bowensec_official



Joint Intake Exercise (JIE) Briefing

Mrs Bernice Kuan, Year Head

Warner • Leader • Champion

To receive these documents:

1. 'N' Level Result Slip

2. 'N' Level Certificate

3. JIE Form N

- Courses eligible to apply under the JIE
- JIE-PIN (a personal password to access the online internet registration system)

4. Others

- Graduation Book
- ITE's Admission and Course Information brochure
- "WHAT'S NEXT" ECG brochure
- DPP & PFP Factsheet (*for 4R/K/L only*)

Certificate Amendment Request

Candidates may request for a re-print of their current exam year certificate only if their name has been printed wrongly due to misspelling.

Administrative fee : \$50 (inclusive of GST)

Inform Year Head/ Form Teacher by **Thursday, 19 December 2024** for school to submit request.

'Form N' shows the courses you are eligible for.

To decide on one's chance of getting into a course, students may refer to **prior year cut-off points** and **compute their ITE aggregate points AND ELMAB3** based on the courses they apply.

2016 JOINT INTAKE EXERCISE (GCE 'N' LEVEL) FOR ITE COURSES FORM N

Based on your 2015 GCE 'N' Level Examination results, you are eligible to apply for the ITE Full-time and Transition programmes listed below.

Joint Intake Exercise 'H' Full-time Higher Nitec Courses under Direct-Entry-Scheme to Polytechnic Programme (DPP)

Course	College	Course	College	Course	College
FPF12	CE-SM	FPINT	CC-AM	FPNST	CW-CK
FPFRT	CE-SM	FPINT	CE-SM		
FPFSE	CC-AM	FPINT	CW-CK		
FPFCE	CC-AM	FPMCE	CC-AM		
FPFCE	CE-SM	FPMCE	CW-CK		
FPFCE	CW-CK	FPMCE	CC-AM		
FPFLE	CE-SM	FPMEC	CE-SM		
FPFLE	CW-CK	FPMEC	CW-CK		
FPFAD	CC-AM	FPNST	CE-SM		

Joint Intake Exercise 'N' Full-time 2-Year Nitec Courses

Course	College	Course	College	Course	College	Course	College	Course	College
NFAA2*	CC-AM	NFECB	CE-SM	NFFS2	CE-SM	NFICN	CE-SM	NFRT2	CW-CK
NFAC2*	CW-CK	NFECB	CE-SM	NFFS2	CW-CK	NFICN	CW-CK	NFSDA*	CC-AM
NFAF2	CE-SM	NFECB	CC-AM	NFFTA	CE-SM	NFLSE	CE-SM	NFSDI*	CC-AM
NFAME	CC-AM	NFECB	CE-SM	NFFTA	CW-CK	NFLT2	CC-AM	NFST2	CW-CK
NFATH	CW-CK	NFECB	CC-AM	NFFTL	CE-SM	NFMCK	CC-AM	NFSG2	CC-AM
NFATL	CW-CK	NFECB	CE-SM	NFFTM	CE-SM	NFMCK	CW-CK	NFSG2	CW-CK
NFATE*	CC-AM	NFECB	CW-CK	NFFTM	CW-CK	NFMS2	CC-AM	NFTI	
NFBSE	CC-AM	NFECU	CC-AM	NFFTV	CE-SM	NFMT2	CC-AM	NFVC	
NFBSE*	CE-SM	NFELL	CE-SM	NFTZ*	CC-AM	NFMT2	CE-SM	NFVR	
NFBSE	CW-CK	NFELL	CW-CK	NFTZ*	CE-SM	NFMT2	CW-CK	NFVC	
NFBW2*	CE-SM	NFELL	CE-SM	NFTZ*	CW-CK	NFMS2*	CE-SM		
NFC2X	CE-SM	NFELP	CW-CK	NFHPD*	CE-SM	NFOP2	CE-SM		
NFC2E*	CE-SM	NFPA2*	CC-AM	NFICC	CE-SM	NFPB2*	CW-CK		
NFLAN*	CC-AM	NFFBS	CW-CK	NFICC	CW-CK	NFPID*	CC-AM		
NFDV2	CE-SM	NFFLS	CC-AM	NFICM	CW-CK	NFRS2	CC-AM		
NFOVE	CW-CK	NFFS2	CC-AM	NFICN	CC-AM	NFRS2	CW-CK		

*Applicants who have applied and are shortlisted for these courses will be required to attend an admission interview and/or test on 23 Dec 15 or 24 Dec 15 or 26 Dec 15.

You may refer to the ITE's Admission Soukiet for the names of courses and ITE colleges. To apply, please go to www.ite.edu.sg and click on the button to link you to the application website. At the application website, key in your NRIC/FIN and Birthdate to start your application. Applicants are allowed to indicate a maximum of 12 choices. There is no guarantee that applicants will automatically be granted a place in one of the courses applied for. Admission to a course is based on merit and vacancies for the course.

**For GCE N(A) Level:
JIE 'H' - DPP (2 YR H.NITEC)**

**For GCE N(A)/N(T) Level:
JIE 'N': 2 YR NITEC &
3 YR H.NITEC**

Key Pointers for Students on ITE's Joint Intake Exercise

Use ALL 12 JIE choices wisely!

- Check that you qualify for the course you are applying for.
- Make a considered decision of all choices because there is a chance that you will be posted to one of them.
- If you do not use up all the choices, you are limiting the choices you have in where you could be posted.

Key Pointers for Students on ITE's Joint Intake Exercise

**ALL Students are eligible for JIE.
Those who were unsuccessful in
EAE are also eligible for JIE.**

**Participation in JIE
Main Phase is key to
securing a place in ITE!**

**Do use the Last Aggregate
Score (LAS) published in
ITE's admission portal to
help you make your
course choices.**

**Do consult your
teachers / ECG
counsellors to help you
make your choices!**

**If you are counter-offered
a course, accept it first
before appealing for
another course you may be
more interested in!**

Details of Admissions Exercises

You can find the details of the various admissions exercises from the **Post-Secondary Admissions Exercises booklet** that can be downloaded from: <https://www.moe.gov.sg/post-secondary/admissions>

- DPP
- PFP
- Joint Intake Exercise 'N' / 'E'
- NAFA Foundation Programme



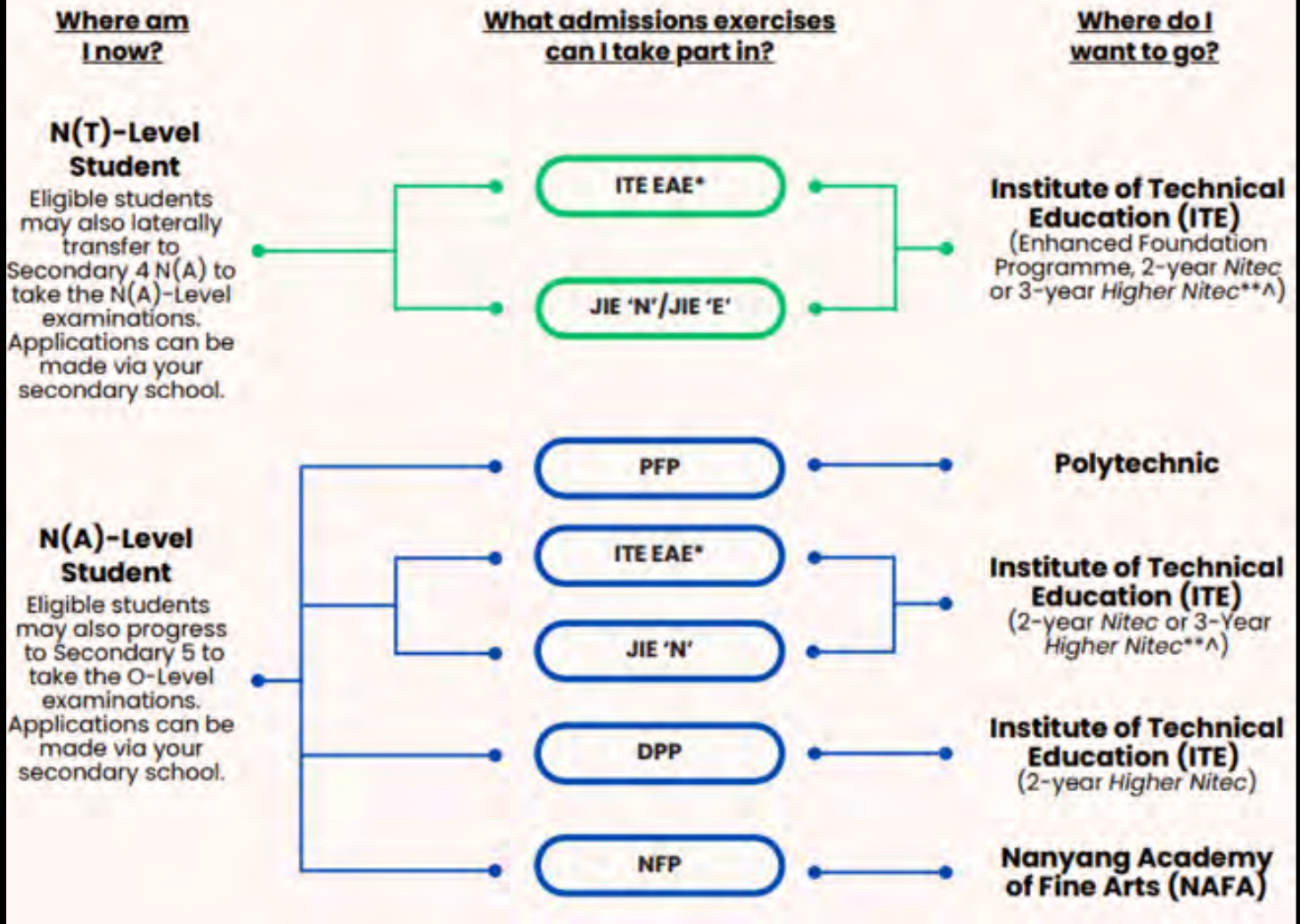
Admissions Exercises

Things to note





Post-Secondary Admissions Exercises for N-Level Students











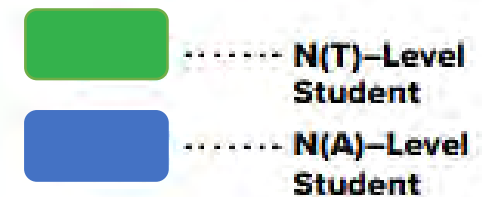
<https://www.moe.gov.sg/post-secondary/admissions>

For more information on applying to these courses, you can visit <https://www.moe.gov.sg/post-secondary/admissions>

For the list of 3-year Higher Nitec courses, please visit <https://www.ite.edu.sg/courses/full-time-courses/nitec-and-3-year-higher-nitec>

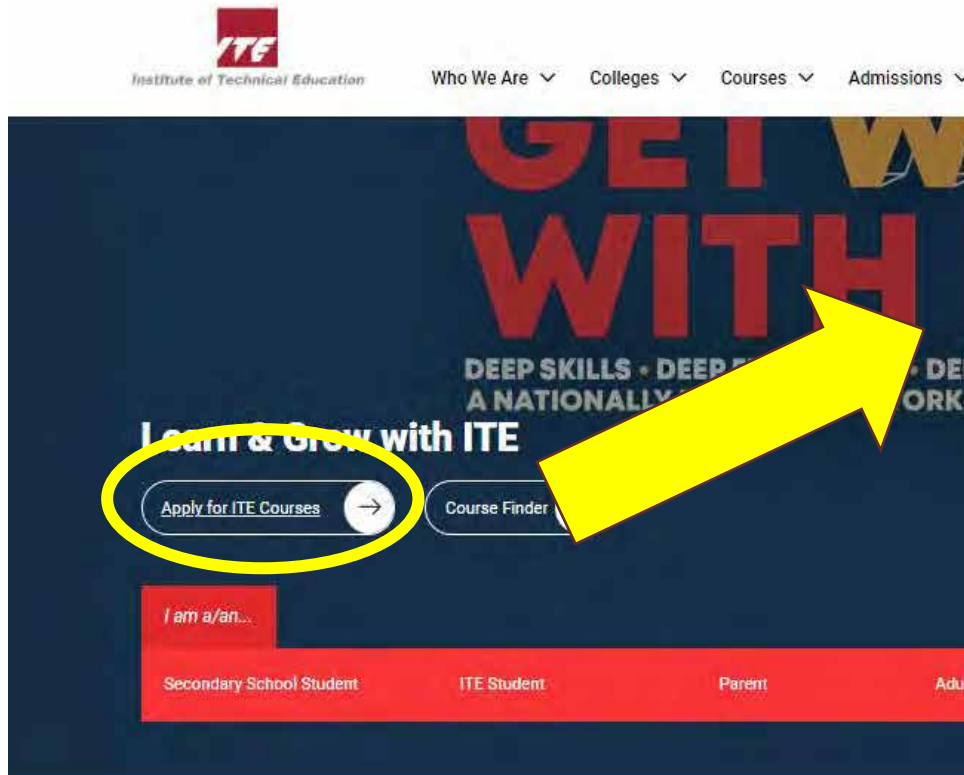
Application Timeline

	<p>Admissions Exercises</p>	<p>JIE 'N'  </p> <p>JIE 'E'  </p> <p>NFP </p> <p>DPP </p> <p>(1st window of applications)</p>	<p>PFP </p> <p>DPP </p> <p>(2nd window of applications)</p>
<p>Application Period</p>	<p>Dec 2024</p>		<p>Jan 2025</p>



Details of Admissions Exercises

- Go to <https://www.ite.edu.sg/>
- Click Apply for ITE Courses
- Select Accordingly



Intake Exercises for ITE Courses

Check Application Result
(Full-Time Courses)

Full-Time 2-Year *Higher Nitec* Courses (Jan 2025 Intake)

For GCE 'N' Students [Direct Entry Scheme to Polytechnic Programme (DPP) (JIE 'H')]

Full-Time 3-Year *Higher Nitec* / 2-Year *Nitec* Courses (Jan 2025 Intake)

For GCE 'N' & GCE 'O' Students (JIE 'N')

For ITE Skills Certificate (ISC) Graduates (ISCJ)

Full-Time 4-Year *Higher Nitec* Course and 3-Year *Nitec* Courses (Jan 2025 Intake)

For GCE 'N' Students (JIE 'E')


Details of Admissions Exercises




JIE 'N'/JIE 'E' – Joint Intake Exercise

The JIE 'N' is for 2-year *Nitec* or 3-year *Higher Nitec* courses offered by ITE. The JIE 'E' is for GCE N(T) students to apply for the 3-year *Nitec* course with Enhanced *Nitec* Foundation Programme.

JIE 'N'/JIE 'E': go.gov.sg/applyjie



..... N(T)–Level Student



..... N(A)–Level Student

Details of Admissions Exercises

For 4R/K/L Students

Only applicable to N(A) Level Students

PFP – Polytechnic Foundation Programme

PFP is a one-year programme that offers a practice-oriented curriculum taught by polytechnic lecturers to better prepare polytechnic-bound Secondary 4 N(A) students for entry into selected polytechnic diploma courses. PFP students are given provisional places in diploma programmes, subject to them passing all modules in the one-year programme.

PFP: go.gov.sg/pfp

DPP – Direct-Entry-Scheme to Polytechnic Programme

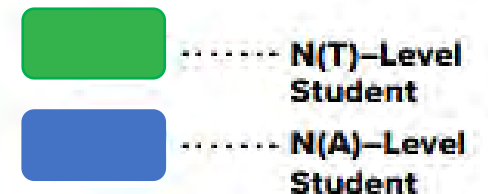
DPP allows Secondary 4N(A) students to be admitted directly into selected 2-year *Higher Nitec* programmes at ITE without having to sit for the O-Level examinations or undergo a *Nitec* programme. DPP students who successfully complete their *Higher Nitec* courses at ITE and attain the required qualifying Grade Point Average (GPA) scores are guaranteed a place in a polytechnic diploma course mapped to their *Higher Nitec* course.

DPP: go.gov.sg/applydpp

NFP – NAFA Foundation Programme

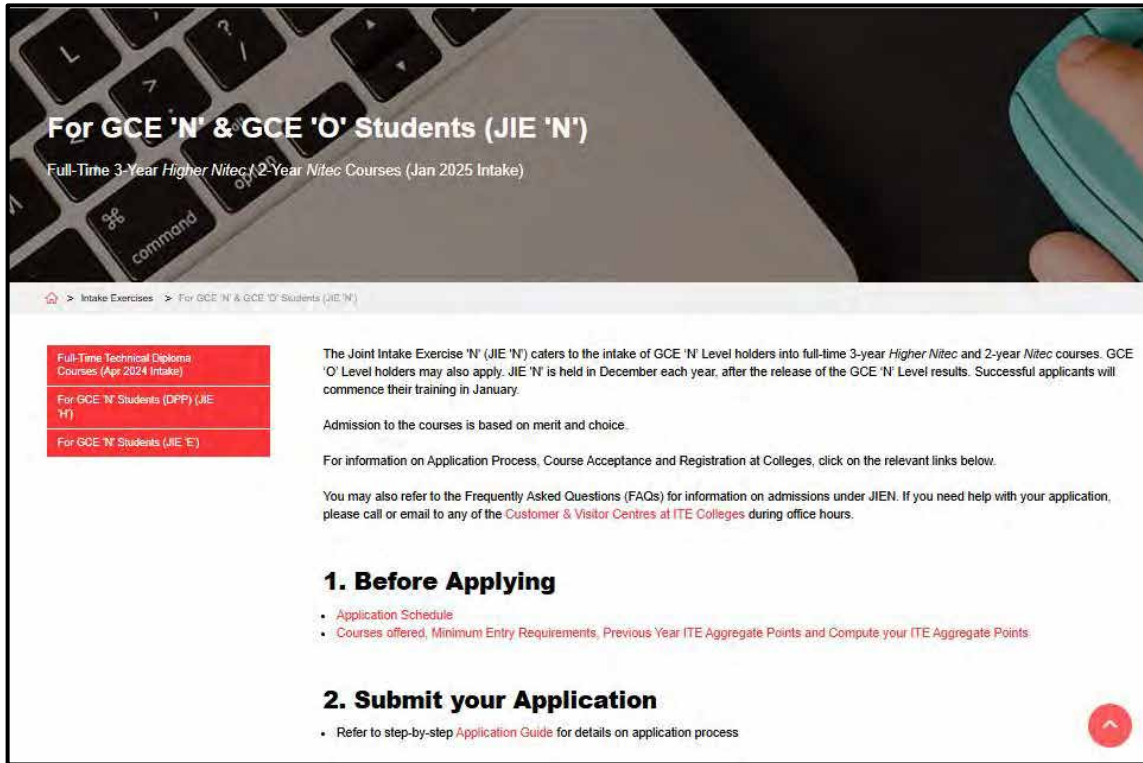
NFP is a one-year practice-based programme that prepares N(A) Level holders to pursue a diploma in the creative arts. NFP students who successfully complete the programme will be offered a place in their chosen diploma course at NAFA.

NFP: go.gov.sg/applynafafp



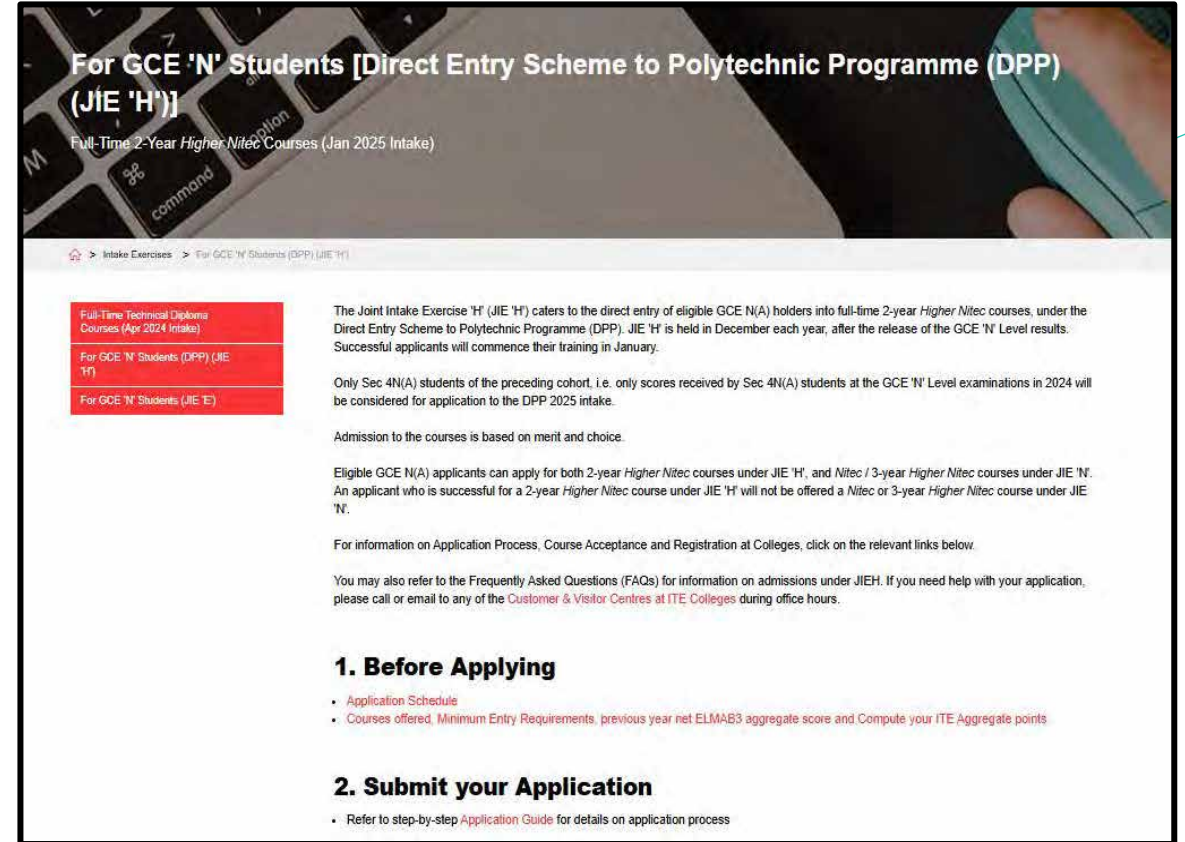
Details of Admissions Exercises

JIE 'N' for 2 Yr NITEC & 3 Yr H.NITEC Courses



Applicable to ALL Students

JIE 'H' for 2 Yr H.NITEC Courses (DPP)



Only applicable to 4R/K/L Students

Important Note

JIE 'N' 2-Yr NITEC or 3-Yr Higher NITEC Courses:

Students applying for the above courses will need to take note:

- **Course eligibility** - the **course code** appear in your **Form N**.
- **Course aggregate** - Your aggregate of **best 4 GCE 'N' Level subjects**, including pre-requisite subjects and bonus points is less or close to the course aggregate.

S/N	3-Year Higher Nitec Course	Course Code	College Code	2024 JIE 'N' ITE Aggregate Score* based on 4 Subjects	Entry Requirements
1	Nursing^ @	HF3NS	CE-SM	15	3 GCE 'N' Passes (Grade A-D or Grade 1-5) in English Language, Mathematics and one other subject Or 2 GCE 'O' Grades (Grade 1-8) in any two subjects
2	Electrical Engineering# <small>NEW</small>	HF3EE	CE-SM CW-CK	- -	3 GCE 'N' Passes (Grade A-D or Grade 1-5) in Mathematics and two other subjects Or 2 GCE 'O' Grades (Grade 1-8) in any two subjects
3	Accounting	HF3AC	CC-AM CE-SM CW-CK	5 6 6	3 GCE 'N' Passes (Grade A-D or Grade 1-5) in English Language and two other subjects Or 2 GCE 'O' Grades (Grade 1-8) in any two subjects
4	Business Administration	HF3BA	CC-AM CE-SM CW-CK	3 4 3	
5	Customer Experience <small>NEW</small>	HF3CX	CW-CK	-	
6	Event Management	HF3EV	CC-AM	5	
7	Hospitality Operations^ <small>NEW</small>	HF3HH	CW-CK	-	
8	Passenger Services	HF3PS	CC-AM CE-SM	5 9	



Important Note: Specific course requirements

JIE 'N' 2-Yr NITEC or 3-Yr Higher NITEC Courses

(1) Courses require students to go for Interview:

- Aerospace Avionics; Aerospace Technology; Nursing;
- Students applying for the above courses will need to attend an on-campus interview scheduled on **Mon 23 Dec 2024 or Thu 26 Dec 2024** if shortlisted.

Important Note: Specific course requirements

JIE 'N' 2-Yr NITEC or 3-Yr Higher NITEC Courses

(2) Courses require students to pass colour vision test.

- Aerospace Avionics; Aerospace Technology; Applied Food Science; Architectural Technology; Automotive Technology; Chemical Process Technology; Communications Design; Electrical Engineering; Electronics Engineering; Facilities Management & Engineering; Film & Video Production; Landscape Management & Design; Interior & Product Design; Mechatronics & Robotics; Rapid Transit Technology; Security System Integration; Technical Theatre & Production; Vertical Transportation and Visual Merchandising.
- Colour vision test will be conducted for applicants enrolled into these courses. Colour Vision Test is available over the Internet at <https://colormax.org/colorblind-test/> and at the ITE Colleges conducting these courses.
- Please take the test before submitting your application if you are not sure whether you are free from colour appreciation deficiency.

Important Note: Specific course requirements

JIE 'N' 2-Yr NITEC or 3-Yr Higher NITEC Courses

(3) Courses require students to pass medical eligibility.

- All **prospective healthcare students** must be **fully vaccinated against COVID-19** with a vaccine regime recognised in Singapore.
- Due to the special requirements of the healthcare profession and in the delivery of direct patient/client care, all applicants applying for **2-year Higher Nitec in Community Care & Social Services [V33]** have to pass a **pre-admission medical examination** and be free from physical and mental handicap to ensure suitability.
- Whilst not comprehensive, the following medical conditions will lead to non-acceptance into the course: • Epilepsy • Uncontrolled Diabetes • Legal Blindness • Uncontrolled Hypertension • Active Tuberculosis • Uncontrolled Asthma • Profound Deafness • Mobility Restricted (Hindering Performance) • Psychiatric Condition • Physical Dependence upon Mobility Equipment

Important Note: Specific course requirements

JIE 'N' 2-Yr NITEC or 3-Yr Higher NITEC Courses

(4) Opticianry course require students to pass interpersonal & psychomotor test.

Eyecare practitioners are required to provide care, consultation and management of a patient's vision through eye tests and effective communication. Therefore, good interpersonal skills and good psychomotor ability is required.

All applicants must possess the following abilities to perform direct eyecare on clients safely and effectively:

- **Mental-Cognitive ability**, including interpersonal-communication, emotional-behavioural stability to function under stressful work environment, and provide safe eyecare to clients.
- **Physical ability** to move around in a clinical/retail environment, including standing during service delivery.
- **Auditory ability** to communicate with patients under normal speaking level sounds.
- **Visual ability** to read small print on ophthalmic trial lenses and digital display on instruments.

Please refer to the Ministry of Health (MOH) website on "Fitness to Practice" for registered Opticians, stipulated by the Optometrists and Opticians Board.

Information For Students on Key Dates for Jan 2025 intake

1. All N(A)* /N(T) school leavers are encouraged to submit an application during the **1st Phase (Main Phase)** between **16 Dec 2024 (2.30pm) to 19 Dec 2024 (5pm)**. Application results for the 1st Phase will be released on **30 Dec 2024 at 9am**.
2. If you wish to appeal, please accept the course offered **before** applying in the **2nd Phase (Late Application/Appeal Phase)** between **30 Dec 2024 to 3 Jan 2025**. The application results for the 2nd Phase will be known on **10 Jan 2025 at 9am**.
3. Unsuccessful applicants can appeal under the **3rd Phase (Final Top-up Phase)** between **10 Jan to 17 Jan 2025 and 23 Jan to 7 Feb 2025** for courses with vacancies. The application results for the 3rd Phase will be known between **14 Jan to 23 Jan 2025** and **23 Jan to 13 Feb 2025**.

*N(A) students progressing to ITE

For further enquiries, N-Level school leavers can contact
ITE Hotline: 1800-2222-111

Important Note

For 4R/K/L Students

JIE 'H' DPP – 2-Yr NITEC Higher NITEC Courses:

Students applying for the above courses will need to take note:

- **Course eligibility** - the course code appear in your Form N (19 points or less for raw ELMAB3 and meet the minimum entry requirements for the course).
- **Course aggregate** – Your aggregate of net ELMAB3 including CCA points is less or close to the course aggregate listed on the website.

BUSINESS & SERVICES			
Accounting ②	FPACC	CC-AM	8
		CE-SM	10
		CW-CK	10
Event Management ②	FPBSE	CC-AM	9
Business Administration ②	FPBNS	CC-AM	9
		CE-SM	9
		CW-CK	7
Hospitality Operations ②	FPHPO	CW-CK	11
Logistics & Supply Chain Management ②	FPLIT	CE-SM	11
Tourism ②	FPLTO	CW-CK	10
Customer Experience ② (previously known as Service Management)	FPBSC	CW-CK	11

A total of 19 points or less for English Language, Mathematics and 3 other subjects (ELMAB3) in the GCE 'N(A)' examinations

For the ELMAB3 aggregate score, you must get:

- Grade 1-3 in English Language
- Grade 1-4 in Mathematics
- Grade 1-5 in the 3 other subjects

Important Note

JIE 'H' DPP – 2-Yr NITEC Higher NITEC Courses:

- For students who took GCE O Level subjects e.g. O Level English AND/OR Math, you will NOT have your **EMB3** based on your N Level results.
- Hence, you will use your **Prelims results** (after conversion) for English/ Math/ Science/ Humanities to apply for your DPP.
- **The courses reflected in your Form N for JIE 'H' should reflect the courses you are eligible based on your converted prelim results.**

GCE 'O' Level Grade	Converted Grade
A1-B3	1
B4-C6	2
D7	3
E8	4
F9	5

Key Dates for Jan 2025 Intake Exercise

Key Activity	Period for 2/3-Year Nitec Courses , and 3/4-year Higher Nitec courses	Remarks
<u>1st Phase (Main Phase)</u>		
Application	16 Dec 2024 (2.30pm) to 19 Dec 2024 (5pm)	Apply through the Internet at https://www.ite.edu.sg with NRIC / FIN and Date of Birth. You may also apply using SingPass.
Release of Results	30 Dec 2024 at 9am	Check results at https://istudent.ite.edu.sg with web ID and password
Acceptance of Course Offer Period	30 Dec 2024 to 3 Jan 2025	Accept course offer at https://istudent.ite.edu.sg with web ID and password

Key Dates for Jan 2025 Intake Exercise

Key Activity	Period for 2/3-Year Nitec Courses, and 3/4-year Higher Nitec courses	Remarks
<u>2nd Phase (Late Application/Appeal Phase)</u>		
Application	30 Dec 2024 to 3 Jan 2025	Apply through the Internet at https://istudent.ite.edu.sg with NRIC / FIN and Date of Birth. You may also apply using SingPass.
Release of Results	10 Jan 2025 at 9am	Check results at https://istudent.ite.edu.sg with web ID and password
Acceptance of Course Offer Period	10 Jan 2025 to 12 Jan 2025	Accept course offer at https://istudent.ite.edu.sg with web ID and password

Key Dates for Jan 2025 Intake Exercise

Key Activity	Period for 2/3-Year Nitec Courses, and 3/4-year Higher Nitec courses	Remarks
<u>3rd Phase (Final Top-up Phase)</u>		
Application	1 st Top-up Phase Application - 10 Jan to 17 Jan 2025 2 nd Top-up Phase Application - 23 Jan to 7 Feb 2025	Apply through the Internet at https://istudent.ite.edu.sg with NRIC / FIN and Date of Birth. You may also apply using SingPass.
Release of Results	1 st Top-up Phase - 14 Jan to 23 Jan 2025 2 nd Top-up Phase - 23 Jan to 13 Feb 2025	Check results at https://istudent.ite.edu.sg with web ID and password
Acceptance of Course Offer Period	1 st Top-up Phase - 14 Jan to 23 Jan 2025 2 nd Top-up Phase - 23 Jan to 13 Feb 2025	Accept course offer at https://istudent.ite.edu.sg with web ID and password

Jan 2025 Intake Term Commencement Date: 13 Jan 2025

Checking of Posting Results/Accept Course Offer

2-Year Nitec and 3-Year Higher Nitec Courses

3-Year Nitec/4-year Higher Nitec Course with EFP

(for N(T) students with 0, 1 "N" pass)

1. Go to <https://istudent.ite.edu.sg>.
2. Enter **web ID** and password.
3. Click '**Self-Service**' followed by '**Student Admission**' followed by '**View Application Results**' to view the application results and to accept course offer.

The above steps applies to all phases.
For more details, please refer to ITE website.

Key Dates for Jan 2025 Intake Exercise

Key Activity	Application for <u>DPP</u> Higher Nitec Courses	Remarks
Main Application Period	Day of Release of GCE 'N' Results Mon 16 Dec 2024 (2.30pm) to Thu 19 Dec 2024 (5pm)	Apply through the Internet at www.ite.edu.sg with NRIC & Birthdate; Singpass
Results of Main Application and Course Acceptance	Fri 20 Dec 2024 (2pm) (accept course offer by Thu 26 Dec 2024)	Check results at www.ite.edu.sg with Web ID & Password
Appeal Application Period	Fri 20 Dec 2024 (2pm) to Thu 26 Dec 2024	Apply through the Internet at www.ite.edu.sg with NRIC & Birthdate; Singpass
Release of Appeal and Course Acceptance Results	Mon 30 Dec 2024 (accept course offer by Fri 3 Jan 2025)	Check results at www.ite.edu.sg with Web ID & Password
College Reporting & Term Commencement (for Main and Appeal phases): Mon 13 Jan 2025		

Eligible GCE NA holders may apply for DPP Higher Nitec Courses, 3-year Higher Nitec and Nitec courses. If you are offered a Higher Nitec Course, you will not be offered a Nitec Courses.

IMPORTANT

Key Dates for Jan 2025 Intake Exercise

Key Activity	Application for <u>DPP</u> Higher Nitec Courses	Remarks
Final Application Period	TBC	Apply through the Internet at www.ite.edu.sg with NRIC & Birthdate; Singpass
Results of Final Application and Course Acceptance	Fri 17 Jan 2025 (accept course offer by Tue 21 Jan 2025)	Check results at www.ite.edu.sg with Web ID & Password
College Reporting (for final application phase): Wed 22 Jan 2025		
Final Appeal Period	Fri 17 Jan 2025 to Tue 4 Feb 2025	Apply through the Internet at www.ite.edu.sg with NRIC & Birthdate; Singpass
Results of Final Appeal and Course Acceptance	Wed 22 Jan 2025 (accept course offer by Wed 12 Feb 2025, 5pm)	Check results at www.ite.edu.sg with Web ID & Password
DPP intake will close on Wed 12 Feb 2025 (5pm)		

Additional Information For Students


Should you require further advice or assistance in your applications or future plans, please contact your teachers and/or ECG Counsellor.

For further inquiries, you may refer to the following hotlines and links for more information and advice on further education:

Institute of Technical Education (ITE)	
ITE Hotline (for ITE admissions and courses)	1800 2222 111 training@ite.edu.sg
ECG Centre @ MOE	
e-Appointment link	https://go.gov.sg/moe-ecg-centre

Additional Information For Students

The information listed in the table below will help you to make an informed decision on which choice of courses you could consider applying at ITE.

S/N	Information	Attachment/Link
1	ITE Factsheet 2024	 2024 JIEN Factsheet
2	ITE Course Booklet 2025	https://www.ite.edu.sg/courses/full-time-courses/download-ite-course-booklet
3	Information on Progression Opportunities (From <i>Nitec</i> Courses to <i>Higher Nitec</i> and Technical diplomas)	https://www.ite.edu.sg/admissions/full-time-courses/nitec-and-3-year-higher-nitec/progression-opportunities
4	Information on Progression Opportunities (from <i>Higher Nitec</i> courses to diploma courses)	https://www.ite.edu.sg/admissions/full-time-courses/higher-nitec/academic-progression

ADDITIONAL RESOURCES

Understanding JIE

- <https://www.moe.gov.sg/post-secondary/admissions/jie>

N level Admission (General)

- <https://www.ite.edu.sg/admissions/full-time-courses/gce-n-level>

Information on 2 Yr NITEC & 3 Yr H.NITEC

- https://www.ite.edu.sg/docs/default-source/admissions-docs/full-time/publications/admission-and-course-information-brochure/admission-and-course-information-brochure-jan-2025.pdf?sfvrsn=25d380a3_9
- <https://www.ite.edu.sg/apply-for-ITE-courses/full-time-3-year-higher-nitec-and-2-year-nitec/for-gce-n-students>

(Course aggregate points can be found on website.)

Information on PFP

- <https://pfp.polytechnic.edu.sg/PFP/index.html>

(Course aggregate points can be found on website under “courses” tab)

Information on DPP

- <https://www.ite.edu.sg/apply-for-ITE-courses/dpp>

(Course aggregate points can be found on the website.)

Options for N(A) Level Students:

Using Sec 4 N(A) Level results

1. Nitec or Higher Nitec, then Polytechnic

Using Sec 4 N(A) Level results

Enter ITE first, then to
go poly after *Higher
Nitec*

2. Direct-entry-
scheme to
Polytechnic
Programme (DPP)
4 to 5 years Prog

Using Sec 4 N(A) Level results

3. Polytechnic
Foundation
Programme (PFP)
4 years Prog

4. Enter poly after
completing
S5N(A)

Comparing the Options

For 4R/K/L Students

Sec 5N	Going to DPP / PFP / NITEC
More academic learning (O Levels is much more rigorous than N Levels)	More hands-on learning
If you qualify for PFP/DPP, but not choose to take this up, you will have to work very hard to do well at O Levels for a place in polytechnic as you will be competing for spaces with 4E students taking O Levels.	If you qualify for PFP/DPP, you have a very good chance of making it to the polytechnic through this path.
If you do not do well at O Levels , you cannot use your N Level results for entrance to Higher NITEC . You may only use your O Level results.	For DPP, you may take an extra year to make it to Polytechnic. For PFP, you will make it to Polytechnic at the same pace as those who qualify through O Levels.

Note:

1. There is a big jump in level of difficulty between N and O level questions.
2. Doing Sec 5 means you will remain in Bowen – there is safety and familiarity.
3. Once you get into Sec 5, you should aim for poly/JC. The main route to poly/JC is the Joint Admissions Exercise, **which S4 students taking O Levels will also be using to apply to poly.**

ELR2B2 ('O' Level results) is used for admissions into the polys.

English Language

2 RELEVANT subjects for the course applied for

2 other best subjects

ELR2B2 must be ≤ 26 points to qualify for Poly; you must qualify for the min. entry requirements of the desired course

Options for 4R/K/L Students:

Option	Eligibility
1. Eligible for 2-Yrs Nitec or 3-Yrs Higher Nitec	
2. DPP (Higher Nitec)	<ul style="list-style-type: none"> • ELMAB3 \leq 19 (prior to deducting any CCA bonus points) • Meet course-specific requirements
3. PFP	<ul style="list-style-type: none"> • ELMAB3 \leq 12 (prior to deducting any CCA bonus points) • Meet subject-specific requirements (<i>e.g. relevant subjects must be at least a grade 3 and for some courses, EL must be grade 2</i>) <p><i>*Eligibility may change after O level results release</i></p>
4. Sec 5N (To take GCE 'O' Levels in 2024)	<ul style="list-style-type: none"> • ELMAB3 \leq 19


Options for 4R/K/L Students:

1. Eligible for Nitec or Higher Nitec → want to apply

- Submit your application: **Mon 16 Dec (2.30pm)** to **Thu 19 Dec 2024 (5pm)**.
- Submit your **Post-4NA Online Form** by **Thu 19 Dec (10am)**.
- Release of Nitec/ Higher Nitec application results: **Mon 30 Dec 2024 from 9am**
- If successful, accept course offer by **Fri 3 Jan 2025**.
- Email/whatsapp your course acceptance to your FT by **Fri 3 Jan 2025**.
- If you do not receive any offer or reject any offer & you are eligible to proceed to Sec 5N, report to Bowen on **Thu 2 Jan 2025 at 7.30am** to continue schooling in Bowen.

Options for 4R/K/L Students:

2. Eligible for DPP (Higher Nitec) ELMAB3 ≤ 19 (before deduction of CCA bonus points)

- Submit your application: **Mon 16 Dec (2.30pm) to Thu 19 Dec 2024 (5pm)**.
- Submit your **Post-4NA Online Form Thu 19 Dec (10am)**.
- Release of DPP application results : **Fri 20 Dec 2024 (from 2pm)**.
- If successful, accept course offer by **Thu 26 Dec 2024**.
- Email/whatsapp your course acceptance email to your FT by **Thu 26 Dec**.
Need not report to Bowen on Thu 2 Jan 2025. Your course will start on **Mon 11 Jan 2025**.
- If you do not receive any offer or reject any offer  intend to proceed to Sec 5N  Report to Bowen at 7.30am on **Thu 2 Jan 2025**.

Options for 4R/K/L Students:

**3a. Eligible for DPP & PFP* → want to apply for both.
(PFP : ELMAB3 ≤ 12)**

- Submit your DPP application: **Mon 16 Dec to Thu 19 Dec 2024 (5pm).**
- Submit your **Post-4NA Online Form** by **Thu 19 Dec (10am).**
- Release of DPP application results: **Fri 20 Dec 2024 from 2pm**
- If successful, accept course offer by **Thu 26 Dec 2024.**
- Email/whatsapp your course acceptance email to your FT by **Thu 26 Dec.**
Need not report to Bowen on Thu 2 Jan. Your course will start on **Mon 11 Jan 2025.**

After release of 'O' Level results (Tentative from Fri 10 to Tue 14 Jan 2025),

- If you are eligible for PFP, you will receive the form to apply. Apply for PFP.
- If successful, accept course offer for PFP. Withdraw from DPP.
- Report to Bowen for Sec 5N lessons till end of Jan 2025.

Options for 4R/K/L Students:

3b. Eligible for DPP & PFP* want to apply for PFP only

(PFP : ELMAB3 \leq 12 before deduction of CCA points and meet subject-specific requirements)

- Submit your **Post-4NA Online Form** by **Thu 19 Dec (10am)**.
- Report to Bowen at 7.30am on **Thu 2 Jan 2025 onwards**.

During release of GCE 'O' Level results,

- If you are eligible for PFP, you will receive the form to apply. Apply for PFP.
- If successful, accept course offer for PFP.
- Report to Bowen for Sec 5N lessons **till end of Jan 2025**.

Options for 4R/K/L Students:

4. Eligible for Sec 5 → take GCE 'O' Levels in 2025
(ELMAB3 \leq 19 excluding CCA points, at least N(A) Grade 5 for all subjects of ELMAB3)

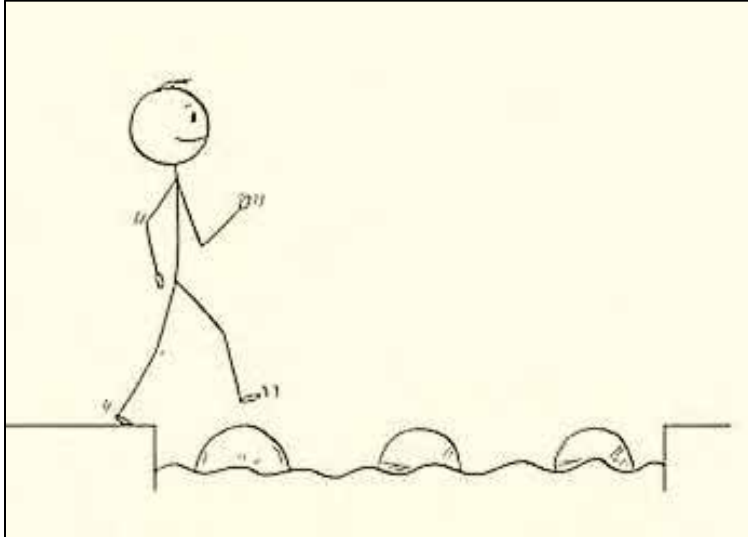
- Attend a **compulsory briefing** conducted by Principal, Mr Loh on **Tue 17 Dec (9am)** at **Lecture Theatre**. Note that attendance will be taken and will be taken into consideration when you choose to take this option. Even those who are keen for PFP should come for this briefing.
- Submit **2025 Sec 5 Option Form** General Office by **Thu 19 Dec (10 am)**.
- Purchase Sec 5N textbooks (where applicable) from school bookshop.
- Report to Bowen at 7.30am on **Thu 2 Jan 2025**.

Advice to 4R/K/L Students

- 1. If you qualify for PFP or DPP, we strongly encourage you to apply.**
 - PFP and DPP lead directly to Poly courses.
 - Moving to the next step in 2025, will give you a sense of progression and is very motivating
2. While you may feel that Sec 5 is a 'safety net' as you can't decide which course to apply for, note: *Sec 5 students apply for Poly together with S4 students taking O Levels.*
- 3. So, trust yourself and apply for the PFP or DPP course(s) that most appeal to you.**

But if you want to study in Sec 5 for O levels,
we warmly welcome you too!

Advice for 4E Students



Stepping
Stones

- At ITE, work hard and get your Nitec, Higher Nitec, etc as “stepping stones” to get to the next stage)
- You can also take Nitec via Traineeship – ie, earn-as-you-learn
- Then:
 - If → Diploma, go ahead
 - If → Work, go ahead
- **Keep upgrading yourself for Lifelong Learning.**

All Students - **Look out for each other** – if your friends act ‘unusually’ ...



If you think your parents will scold you, and you want our help to call them, let us know.

ECG CONSULTATION WITH MS CATHERINE



Date: 16 Dec (Mon) & 18 Dec (Wed)

Time: 8.30 am - 5.30pm

Venue: Hall / ECG Room @ FCE Hub

Booking Link: <https://go.gov.sg/ecg4bowen>

Students who are unable to get a slot, can contact Ms Catherine via email

NG_HUI_FONG_CATHERINE@schools.gov.sg

You can also look for your form teachers for consultation.



**Application closes on
19 Dec (Thu) 5pm**

Please get ready these for the session:

- Result Slip
- Form N
- Prelim Results Slip for students taking 'O' level subjects.



<https://go.gov.sg/ecg4bowen>

COURSE CONSULTATION @ ITE

Students are encouraged to **call the helpline** to make an appointment **before** visiting the Customer & Visitor Centres at the respective ITE colleges.

ITE Headquarters & ITE College Central

Tel: 1800 222 2111 / 6590 2211

Email: training@ite.edu.sg or
college_central@ite.edu.sg

ITE College East

Tel: 6590 2262

Email: college_east@ite.edu.sg

ITE College West

Tel: 6590 2628

Email: college_west@ite.edu.sg

There is no open house.

For general course advising, students may make an appointment online with ITE Education & Career Coaches via

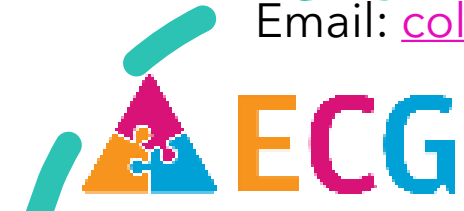
<https://for.edu.sg/ecg>

Parents or students with course enquiries can call the respective colleges or go down to **ITE Central BLK A Level 2.**

16 Dec 3pm - 5.30pm

17- 19Dec 8.30am - 5.30pm

IT staff will station there to assist with the enquiries.



As you set off for your new journey.

We wish only the Best for you.

*May your future be prosperous, may your life be filled
with family and good friends*



To facilitate subsequent follow up by school and MOE HQ, students are to complete the **Post-Sec Option Form and Update Contact & Personal Email** by **Thu 19 Dec, 10am.**

Note: This is not JIE application form.



<https://go.gov.sg/2024-4n-option>