

2 January 2026

Dear Parents/Guardians of Secondary 1 Students,

WELCOME TO TERM 1 2026

1. On behalf of the school and staff, we extend a very warm welcome to you in 2026! We hope that you have spent a meaningful and restful year-end holiday with your teen.
2. In 2025, we launched our refreshed strategic plan to further enhance the distinctiveness of the Bowen Experience and take us into the future of education. This includes providing active learning experiences enabled by technology, promoting interdisciplinary thinking, and activating student voice and agency.
3. To learn well, students will also need to be well. In support of students' holistic growth and well-being, MOE has introduced [enhanced measures to promote healthier screen use in students](#). These reinforce existing school policies, such as "Disconnect to Connect". From 2026, Bowenians can also look forward to additional well-being support measures, namely, refreshed and better-equipped classroom environments, portable personal fans for every student (fully sponsored by the school), and a later reporting day on Wednesday. More enhancements, such as an air-conditioned hall, are in the works.
4. As we embark on the new school year, we would like to provide you with key updates for Term 1 for our Sec 1 students.

A. First Week of School and Update on Health Matters

5. To ease your teen into secondary school, please take note that the reporting and dismissal timings for your teen during Sec 1 Orientation (Fri 2 Jan – Tue 6 Jan) will be as follows:

Time	Fri 2 Jan	Mon 5 Jan	Tue 6 Jan
Reporting Time	8.50am	7.25am	7.25am
Dismissal Time	12.30pm		

The school continues to prioritise student health and remains vigilant in checking in on student well-being. Your support is also crucial towards keeping Bowen a safe environment for students. Please remind your teen to practice good personal hygiene (e.g. washing/sanitising hands) and exercise personal and social responsibility. While mask-wearing is no longer required in a school setting, it remains an effective way to minimise the risk of infectious disease transmission. Students who prefer wearing masks are welcome to continue doing so.

6. If your teen is unwell, please ensure he/she stays at home and seeks medical attention if necessary and inform his/her Form Teachers (FTs). If your teen is recovering from respiratory-related illness, please encourage him/her to exercise social responsibility (e.g. by wearing a mask, minimising social interactions) to help prevent any infectious disease outbreak in schools. In the event your teen has to miss school, his/her learning will be supported. FTs will assign a buddy to update your teen on lessons and collect his/her learning materials. Please encourage your teen to be proactive in finding out on what he/she has missed from his/her buddy.

B. Back Gate Access for Secondary 1 Students

7. Please take note of the following gate access arrangements for Secondary 1 students at the start of the school year:

- For Term 1 Week 0 and Week 1, **Fri 2 Jan to Fri 9 Jan**, all Secondary 1 students may only enter and leave the school via the main school gate at Lorong Napiri.
From **Mon 5 Jan to Wed 7 Jan**, in the event of wet weather, a staff member will be stationed at the back gate to facilitate access 30 minutes before reporting time and during dismissal.
- From Term 1 Week 2 **Mon 12 Jan**, students will be able to enter the school via the back gate along Hougang Ave 2 from 6.30am to 7.29am and use the back gate during dismissal as well.

This arrangement is necessary as students' EZ Link cards need to be programmed for back gate access which we will strive to complete by the end of Week 1.

We appreciate your understanding. If you have any questions, please feel free to contact the General Office at 6385 9466.

C. Secondary 1 Form Teachers

8. To forge stronger school-home partnerships, we are pleased to introduce our team of Sec 1 FTs and share their email contacts below. If you wish to contact FTs by telephone, you may call the school General Office (6385 9466) and request for their extension number.

Class	Form Teachers	Emails
1 Topaz	Ms Suraiya Mdm Joyce Toh	suraiya_izharul@schools.gov.sg toh_lin_lee_joyce@schools.gov.sg
1 Sapphire	Mrs Corinne Teo Mr Irsyad	liew_chee_liang@schools.gov.sg mohamad_irsyad@schools.gov.sg
1 Peridot	Mr Chong How Kiat Ms Monica Suan	chong_how_kiat@schools.gov.sg suan_ching_yeah_monica@schools.gov.sg
1 Amethyst	Dr Banumathi Ms Lai Yan Qing Eve	pichandi_banumathi@schools.gov.sg lai_yanqing_eve@schools.gov.sg
1 Ruby	Ms Norazila Mrs Sandra Lim	norazila_razali@schools.gov.sg teo_cai_ling_sandra@schools.gov.sg
1 Kunzite	Mdm Hu Shuangxi Ms Jean Cai	hu_shuangxi@schools.gov.sg cai_junting@schools.gov.sg
1 Larimar	Mdm Lidia Mr Winston Chua	noorlidiawati_said@schools.gov.sg chua_seng_wee_winston@schools.gov.sg
1 Emerald	Mrs Adeline Lee Ms Tan Shuming	wee_siah_imm_adeline@schools.gov.sg tan_shuming@schools.gov.sg

9. The contact details (work email and telephone number) of your teen's subject teachers are also available on our school website. Teachers will generally be contactable by telephone during office hours. If you email our teachers, they will aim to reply you within 3 working days. We seek parents'/guardians' understanding that teachers may wish to keep their handphone numbers private.
10. The Year Head for Sec 1 is Mr Muhammad Noor Hairil (muhammad_noor_hairil_muhammad@schools.gov.sg).

D. Key Parent Engagement Platforms

11. In the course of your teen's 4-5 years in Bowen, we will be meeting parents/guardians at briefings / Meet-the-Parent Sessions (MPS). Separate letters providing more information on these sessions will be issued at a later date.

Date	Levels
Fri 30 Jan	CCA carnival & Sec 1 Parents Engagement (face to face, evening)
Fri 29 May	Sec 1-5 Full Day MPS (one-to-one meetings with FTs)

E. Bowen FIESTA (Start of Year) 2026

12. Our annual start of year **Bowen FIESTA** (Fun, Interactive, Educational and Structured Activities) will be conducted in Week 1. Bowen FIESTA for Sec 1 students will comprise:

Sec 1 Start Right Camp

The **3D2N school-based camp** will start from **Wed 7 Jan to Fri 9 Jan**. The camp will include two days of overnight stay in school.

The objectives of the Sec 1 Start Right Camp are as follows:

1. To ease the transition for our Sec 1 students by fostering strong peer relationships and teacher-student relationships, and to promote positive school/class culture.
2. Inculcate school values, instil a sense of belonging to the school, and provide experiential opportunities for cohort bonding.
3. Introduce and develop core skills and competencies through basic outdoor activities such as simple outdoor cooking, mini expedition, low elements and team building activities with an emphasis on having a growth mindset and inclusivity.

Parents/ Guardians are invited to join us for the campfire night on **Thu 8 Jan at 8pm** at the school parade square / school hall (in the event of wet weather). Kindly note that dinner is only provided for students. As parking will not be available within school premises, visitors who are driving are advised to park their vehicles at the public car park along Hougang Avenue 8 (HG41) beside the school.

As there are limited seats at the Parade Square / school hall for the campfire, each student should only have up to two family members in attendance. To allow the students to fully enjoy and focus on their activities, parents are kindly requested to remain at the designated area during the session.

Please refer to [Annex A](#) for the camp programme, packing list and other camp related matters.

Overview of Key School Events (January 2026)

Mon		Tue		Wed		Thu		Fri	
29 Dec		30 Dec		31 Dec		1 Jan		2 Jan	
						Public Holiday		Sec 1 Orientation Day 1, 9.00am – 12.30pm S1 students to report by 8.50 am	
5 Jan		6 Jan		7 Jan		8 Jan		9 Jan	
Sec 1 Orientation Day 2, 7.30am – 12.30pm S1 students to report by 7.25 am		Sec 1 Orientation Day 3, 7.30am – 12.30pm S1 students to report by 7.25 am		Sec 1 Start Right Camp Day 1 S1 students to report by 8.25 am		Sec 1 Start Right Camp Day 2		Sec 1 Start Right Camp Day 3	
12 Jan		13 Jan		14 Jan		15 Jan		16 Jan	
Lessons as per timetable		Lessons as per timetable		Lessons as per timetable		Lessons as per timetable		Lessons as per timetable Sec 1 CCA Experience Day 1	
19 Jan		20 Jan		21 Jan		22 Jan		23 Jan	
Lessons as per timetable 1 Topaz & 1 Sapphire Digital Learner Program		Lessons as per timetable		Lessons as per timetable		Lessons as per timetable 1 Peridot & 1 Amethyst Digital Learner Program		Lessons as per timetable CCA Experience Day 2	
26 Jan		27 Jan		28 Jan		29 Jan		30 Jan	
Lessons as per timetable 1 Ruby & 1 Kunzite Digital Learner Program		Lessons as per timetable		Lessons as per timetable		Lessons as per timetable 1 Larimar & 1 Emerald Digital Learner Program		CCA Experience Day 3 Deadline for CCA Option Submission CCA Carnival and Sec 1 Parents Engagement (evening)	

Note

- DSA students will begin attending their allocated CCA sessions from Tue 13 Jan
- Sec 1 CCA Allocation Results will be released on Tue 24 Feb
- Sec 1 students will start CCA from Fri 27 Feb

Bowen Secondary School

2 Lorong Napiri Singapore 547529 tel/ 65 6385 9466 fax 65 6385 6559 www.bowensec.moe.edu.sg

13. A Consolidated Notification on Term 1 activities/programmes was sent to you via Parents Gateway (PG) on **Tue 30 Dec**. Please submit your consent via PG by **Mon 5 Jan**. We seek your understanding that your teen may not be able to participate in the abovementioned activities if we do not receive the consent by the given date.

F. 2026 Home-based Learning

14. Since 2021, secondary schools have embarked on Blended Learning (BL), which is a mix of home-based and in-school activities that leverage on both online and offline approaches to learning. The objective of BL is to nurture self-directed, independent and intrinsically motivated learners.

In Bowen, the Blended Learning experience includes a student-initiated learning component called *BowenExplore!* on Home-Based Learning (HBL) Days where students explore their interests and passions and learn beyond the formal curriculum. Many students have found it a meaningful learning experience.

This year, the school will continue to have regular HBL days starting **Wed 11 Feb**. Please refer to the table below for the HBL schedule for 2026. An Info-Sheet with more details on HBL will be sent via PG at a later date.

Term	Levels	Week/Day
1	S1-5	<ul style="list-style-type: none"> W6 Wed 11 Feb W8 Wed 25 Feb W10 Wed 11 Mar
2	S1-5	<ul style="list-style-type: none"> W4 Wed 15 Apr W6 Wed 29 Apr W8 Wed 13 May
3	S1-5	<ul style="list-style-type: none"> W1 Wed 1 July W3 Tue 14 Jul to Fri 17 Jul <p><i>Note: The GCE Oral Examinations will be conducted in Term 3 Week 3, over three full days and two half-day afternoons.</i></p>
4	S1-3	<ul style="list-style-type: none"> W5 Wed 14 Oct

G. Assessment and Criteria for Progression

15. In recent years, MOE has introduced several policy changes under the Learn for Life movement to nurture our students to be confident and resilient learners. Since 2023, all schools have removed mid-year examinations for all levels as part of ongoing efforts to promote the joy of learning in our students. Sec 1 will have Term Assessments (TA) in Term 1 to 3 and End-of-Year Examinations in Term 4. TAs will take the form of either Pen-and-Paper (PP) tests or Alternative Assessments (AA).
16. More information on assessment matters will be sent to parents/guardians via PG at a later date. Information on all academic matters including assessment will also be available in the e-Student Handbook (see Section I below).

17. Under Full Subject-Based Banding, all Sec 1 students will generally progress to Sec 2. Where applicable, teachers will check in with students and parents to discuss the subject levels that best suit the student going forward. This can include offering subjects at a more/less demanding level, based on the student's interests and learning progress.

H. Updates on School Attire and School Timing

18. Please refer to the updated guidelines below for the school's dress code and reporting time for the various days of the week.

Day	Reporting Time	Attire
Mondays	7.30am – 9.00am	7.30am – 9.00am: Bowen Smart Formal Attire <u>with</u> school tie After 9.00am (optional): 1. Smart Casual Attire <u>OR</u> 2. Smart Formal Attire <u>without</u> tie After 1.30pm onwards (optional): PE T-shirt and formal school bottoms
Tuesdays and Thursdays	7.30am	1. Smart Casual Attire <u>OR</u> 2. Smart Formal Attire <u>without</u> tie
Wednesdays	8.00am (refer to para 20 below)	After 1.30pm onwards (optional): PE T-shirt and formal school bottoms
Friday (Dress-Down Day)	7.30am	CCA T-shirt, Class T-shirt, PE T-shirt and formal school bottoms (skirt/shorts/pants) After 1.30pm onwards (optional): PE T-shirt and formal school bottoms

19. For more information on school attire (e.g. visual representation on the School Attire guidelines), please refer to the 2026 e-Student Handbook or "School Matters" section on the school website.
20. To better support student well-being, Bowenians can report to school by 8.00am every Wednesday, from Term 1 Week 2 (14 Jan) onwards. We seek your understanding that students may be required to report earlier on selected Wednesdays with planned special activities, e.g. on 7 Jan, Sec 1 students will report at 8.25am for their Sec 1 Start Right Camp.

I. e-Student Handbook

21. All students will receive the 2026 e-Student Handbook in January via their Student ICON emails. The Handbook will include important information such as school rules, the school calendar, curriculum hours, and progression criteria. To help our new Bowenians start the new school year well, teachers will also introduce them to READY BE learning dispositions and GRACE protocols.

J. Tightened National Guidelines for Use of Smartphones/smartwatches in Secondary Schools

22. As part of Grow Well SG launched in Jan 2025, MOE has introduced enhanced measures in secondary schools to help students cultivate healthier screen use habits and better support student well-being in the digital age. Responsible use of smartphones and other digital devices (e.g. cameras, smartwatches, etc.) is expected of all students both in school and out of school. With the availability of PLDs, students will not need their smartphones/smartwatches for learning or accessing online learning materials. Hence, during curriculum hours (including recess, lunch breaks, CCAs, after-school programmes, enrichment programmes, extra/remediation lessons and learning journeys in general) all students are required to lock their smartphones/smartwatches in their personal lockers. Students are allowed to retrieve their smartphones/smartwatches from the lockers only after curriculum hours.

Use of smartphones is allowed only:

- During lessons/activities, when specifically required by teachers for teaching and learning; and
 - End of curriculum time only at the foyer for communication with parents.
23. Given the ubiquitous nature of technology, we hope that this practice will encourage our students to develop self-regulation in using technology wisely, “Disconnect to Connect” with their peers, reduce screen time and digital distractions, as well as prevent damage to, loss or theft of their devices. It will also allow them to better leverage their PLDs as the main tool for learning without distractions from social media, game notifications and chats during curriculum time.
24. The school will be reminding students on the tightened national guidelines and we believe that our students will be able to abide by them. However, there may be consequences (e.g. confiscation of smartphones/smartwatches) should students be found flouting the rules.
25. The school seeks parents/guardians’ strong support to help our students to use technology responsibly and appropriately. Should you need to contact your teen during curriculum hours due to any urgent matters, please contact the General Office at 6385 9466.

K. School Attendance and Student Absence feature on Parents Gateway (PG)

26. Attendance at school and school-related activities (e.g. CCA, Sports Day, enrichment days, etc) is compulsory to ensure students’ holistic development and continuity of learning. Students who are absent must submit a valid medical certificate (MC) or a letter from parents with valid reasons to the relevant teacher(s) immediately upon their return to school after their absence.
27. To ensure regular attendance, parents/guardians are encouraged to excuse their teens from school through parent’s/guardian’s letters only for valid reasons such as unforeseen family circumstances. Thus, the school will only accept up to 5 letters per semester. If the student is unwell, we advise them to seek medical attention and be excused from school through a MC.

28. Students should not be travelling overseas during term time unless due to extenuating reason(s). On-going assessments may be impacted if student is absent from school without valid reason (e.g. no MC). For information on "School Terms and Holidays for 2026", please visit <https://www.moe.gov.sg/news/press-releases/20250730-school-terms-and-holidays-for-2026>
29. Parents/guardians (i.e. primary contact person) will receive a notification via Parents Gateway (PG) or SMS (for parents/guardians not onboard PG) by **10.00am** if your teen is absent from school.
30. We are also pleased to share that the new **Student Absence feature** on PG will be made available to our school in **Jan 2026**. With this feature, you will be able to submit reasons for your teen's absence, and attach medical certificates and documents, directly through the PG app. For more information (i.e. user guide and FAQs), please refer to the PG message on this new feature sent on **Tue 30 Dec**.
31. Should you need to verify your teen's attendance, please contact the General Office or his/her FTs at 6385 9466.

L. Student Details Form

32. A Student Details Form (SDF) will be sent to parents/guardians via PG. Please confirm that the information is up-to-date and respond online by **Fri 23 Jan**. For parents/guardians not onboard PG, a hardcopy will be passed to you through your teen for verification. Should there be any changes, please update the form (indicate in red ink) and return it to FTs through your teen. As the form contains sensitive information, please remind your teen to keep the form safe and hand it to his/her FTs as soon as possible.

M. Personal Learning Device (PLD)

33. Every secondary school student will own a school-prescribed Personal Learning Device (PLD). The PLD will be used together with the national e-learning platform – the Singapore Student Learning Space (SLS) – as well as other educational technology to personalise and enhance students' learning. This will also enable students to acquire digital skills and apply these skills as they navigate an increasingly digitalised world.

A separate letter will be sent to all Sec 1 parents on **Mon 12 Jan** via PG with regards to the purchase of PLDs. For details on the type of device, payment and financial assistance please refer to the "Parental Consent for the Purchase of Personal Learning Device ("PLD")" that will be sent to you.

We seek all parents'/guardians' support to submit your consent by **Tue 20 Jan** so that the school will be able to proceed with the purchasing process.

N. Term 1 Key Programmes, Events and Holidays

34. After the start of year Bowen FIESTA, lessons will resume as per timetable from **Mon 12 Jan**. Here are 2026 Term 1 highlights for Sec 1 students:

Date	Programmes/ Events	Remarks
Fri 16, 23 & 30 Jan	CCA experience Day 1,2 and 3	Students can refer to http://linktr.ee/bowenpe for more details for CCA experience
Fri 30 Jan	Sec 1 CCA Carnival and Parents Engagement (Evening)	A separate letter for the CCA carnival and Meet the Parents Session will be sent via PG.
Mon 2 Feb to Fri 27 Feb	Sec 1-5 Term Assessment 1	A separate letter on the schedule of the Term Assessments will be issued at a later date.
Mon 9 Feb	Total Defence Day NE Commemoration	Held during school hours.
Tue 10 Feb	Sports Day for Sec 1-5 (AM)	A separate letter will be issued at a later date.
Wed 11 Feb	Home-Based Learning (HBL) for Sec 1-5	Students will need to log into SLS by 8.00am for check-in and attendance taking.
Mon 16 Feb	Chinese New Year Celebration	Dismissal Time at 10am.
Tue 17 Feb – Wed 18 Feb	Chinese New Year Public Holiday	-
Wed 25 Feb	Home-Based Learning (HBL) for Sec 1-5	Students will need to log into SLS by 8.00am for check-in and attendance taking.
Thu 26 Feb	Class Committee Workshop (Class Leaders & Peer Support Leaders)	Held in the afternoon. A separate PG notification will be sent to parents/guardians of students involved.
Mon 2 Mar to Fri 6 Mar	Bowen Care and Inclusion Week	Held during school hours.
Wed 11 Mar	Home-Based Learning (HBL) for Sec 1-5	Students will need to log into SLS by 8.00am for check-in and attendance taking.
Fri 13 Mar	Issuance of T1 Result Slips	Held during school hours.
Sat 14 Mar to Sun 22 Mar	School Holidays	Students may be required to attend CCA activities or other programmes. Parents/guardians will be notified via PG beforehand. Student Protected Time will be on Thu 19 Mar to Fri 20 Mar during which no school activities will be held.

35. The list of Term 1 after-school activities which will be held on Mondays and Thursdays for Sec 1 is provided below. The activities generally end around 5-6 pm (your teen will be informed of the exact timings by the teachers). Most activities will be held in school. Separate letters/consent forms will be issued for activities held outside school.

Week	Monday	Programme	Class	Thursday	Programme	Class
W3	19 Jan	Digital Learner Workshop	1 Topaz 1 Sapphire	22 Jan	Digital Learner Workshop	1 Peridot 1 Amethyst
W4	26 Jan	Digital Learner Workshop	1 Ruby 1 Kunzite	29 Jan	Digital Learner Workshop	1 Larimar 1 Emerald
W8				26 Feb	Applied Learning Programme (ALP) #1	All Sec 1 classes
W10				12 Mar	ALP #2	All Sec 1 classes

36. For regular updates on school programmes and the happenings in and around the school, please feel free to check our school website, and follow us on the school's official Facebook page at <https://www.facebook.com/bowensec> or our official Instagram account [@bowensec_official](#).

Thank you for your support and for partnering us closely as we nurture our students to be future-ready Passionate Learners, Servant Leaders and Champions of Good.

Yours faithfully,



Mr Loh Chih Hui
Principal

Use of photographs and video images

Photographs or video images of students, parents and visitors may be taken during school activities and events such as classroom lessons, enrichment activities, CCA activities, camps, etc. The school may use and publish such photographs or video images in school publications, the school's website, social media channels, or other communication channels.

ANNEX A - Camp programme, packing list and other camp related matters.

3D2N Sec 1 Start Right Camp Programme (Wed 7 Jan to Fri 9 Jan)

Camp Programme Subjected to changes*					
Day 1 Reporting time at 0825					
1 T, S, P		1 A, R, K		1 L, E	
0830-0930	Camp opening				
0930-1000	Team break				
1000-1130	Goal setting and Ice breaker games				
1130-1300	Meal briefing and lunch				
1300-1730	Team Challenge, Tea break & Campcraft	1300-1730	Terra mission & Tea break	1300-1730	Outdoor cooking, Tea break & Low elements
1730-1830	Dinner				
1830-1930	Blind Men's trail				
1930-2030	Group time & Supper				
2030-2130	Shower	2030-2130	Shower / campfire prep	2030-2130	Campfire prep
2130-2230	Campfire prep	2130-2230	Shower / campfire prep	2130-2230	Shower
2230	Lights out				

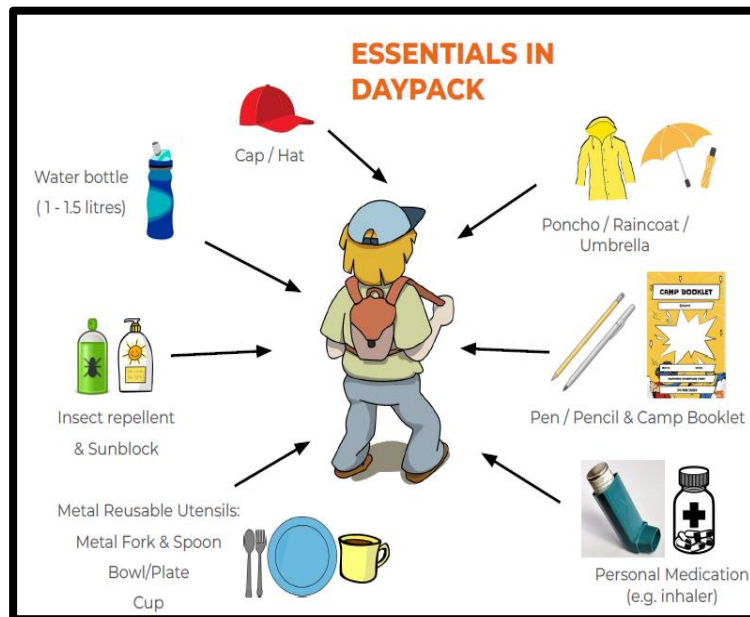
Camp Programme Subjected to changes*					
Day 2					
1 T, S, P		1 A, R, K		1 L, E	
0630-0700	Rise and shine				
0700-0800	Breakfast				
0800-1230	Outdoor cooking, Tea break & Low elements	0800-1230	Team Challenge, Tea break & Campcraft	0800-1230	Terra mission & Tea break
1230-1330	Lunch				
1330-1730	Terra mission & Tea break	1330-1700	Outdoor cooking, Tea break & Low elements	1330-1700	Team Challenge, Tea break & Campcraft
1730-1815	Shower	1730-1815	Shower / campfire prep	1730-1815	Campfire prep
1815-1900	Campfire prep	1815-1900	Shower / campfire prep	1815-1900	Shower
1900-2000	Dinner				
2000-2130	Campfire				
2130-2200	Group time				
2200-2230	Supper				
2230	Lights out				

Camp Programme Subjected to changes*	
Day 3	
1 T, S, P, A, R, K, L and E	
0700-0730	Rise and shine
0730-0815	Breakfast
0815-0845	Area Cleaning
0845-1030	Mascot magic
1030-1100	Final group time
1100-1145	Camp closing
1200	Home sweet home

Camp Packing List

Checklist for Daypack			
S/N	Item	Quantity	Packed?
1	Cap / Hat	1	<input type="checkbox"/>
2	Waterbottle (1 - 1.5 litres)	1	<input type="checkbox"/>
3	Insect repellent	1	<input type="checkbox"/>
4	Sunblock	1	<input type="checkbox"/>
5	Poncho / Raincoat / Umbrella	1	<input type="checkbox"/>
6	Pen / Pencil & Camp Booklet	1	<input type="checkbox"/>
7	Personal medication (e.g. inhaler)	sufficient	<input type="checkbox"/>
8	Metal Reusable utensils (Metal fork & spoon, bowl/plate, cup)	1	<input type="checkbox"/>

Checklist for Camp Bag			
S/N	Item	Quantity	Packed?
<i>Clothes</i>			
1	T-shirt (PE / CCA / school-based)	2	<input type="checkbox"/>
2	PE shorts	1	<input type="checkbox"/>
3	Long / Track pants	1	<input type="checkbox"/>
4	Undergarments	2	<input type="checkbox"/>
5	Socks	2	<input type="checkbox"/>
6	Pyjamas	1	<input type="checkbox"/>
7	Jacket (optional)	1	<input type="checkbox"/>
<i>Toiletries</i>			
8	Shampoo	1	<input type="checkbox"/>
9	Body wash	1	<input type="checkbox"/>
10	Toothbrush	1	<input type="checkbox"/>
11	Toothpaste	1	<input type="checkbox"/>
12	Comb	1	<input type="checkbox"/>
13	Towel	1	<input type="checkbox"/>
<i>Others</i>			
14	Slippers / Sandals (<i>for showertime</i>)	1	<input type="checkbox"/>
15	Laundry bag / plastic bag	2	<input type="checkbox"/>
16	Torchlight & Batteries	1	<input type="checkbox"/>
17	Sleeping bag	1	<input type="checkbox"/>



OTHER MATTERS:

TELEPHONE CALLS

To minimize disruption to the programme, all personal calls will not be entertained unless they are of utmost urgency.

Family members who need to contact any student for urgent matters, can call the school General Office at 6385 9466. We will provide parents with a separate number for urgent matters between 7pm and 7am nearer to the camp.

MEDICAL MATTERS

All students under any form of medication should bring their medicines along. They are to **inform their trainers and form teachers about their medication** so that arrangements can be made for them to take their medicines during the programme. There will be a sick bay for students with minor ailments may rest and recuperate. Students who need immediate and more comprehensive medical attention would be sent to the nearest clinic / hospital.